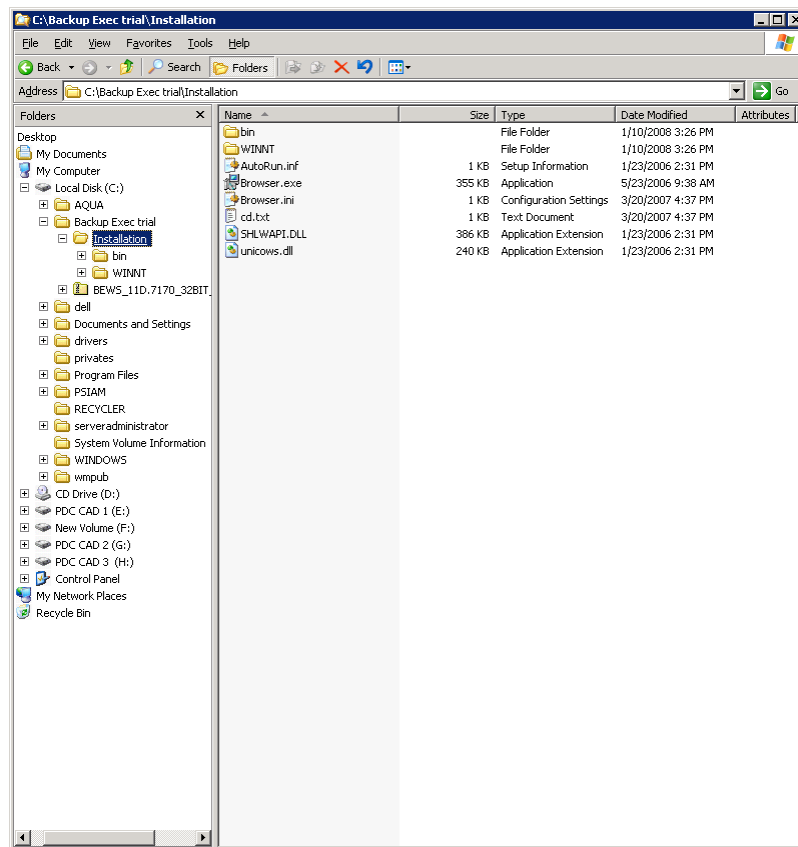


Backup Exec installation procedure for ProQA & AQUA

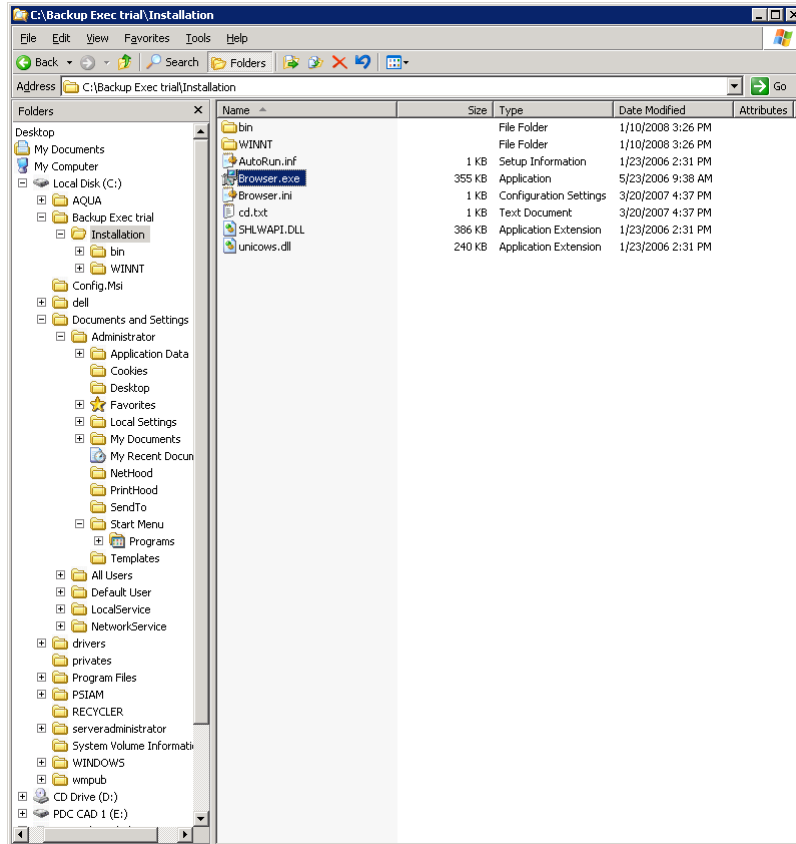
Installation

This process uses a trial version of Backup Exec for small business which can be downloaded from the Symantec site at: (<http://www.symantec.com/business/products/downloads/index.jsp>).



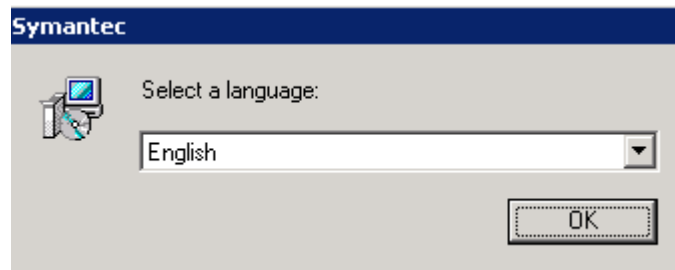
Once the file has been downloaded, you will need to unzip the files into a directory on the server. In this example we have unzipped it into a directory called **Installation**.

Backup Exec installation procedure for ProQA & AQUA

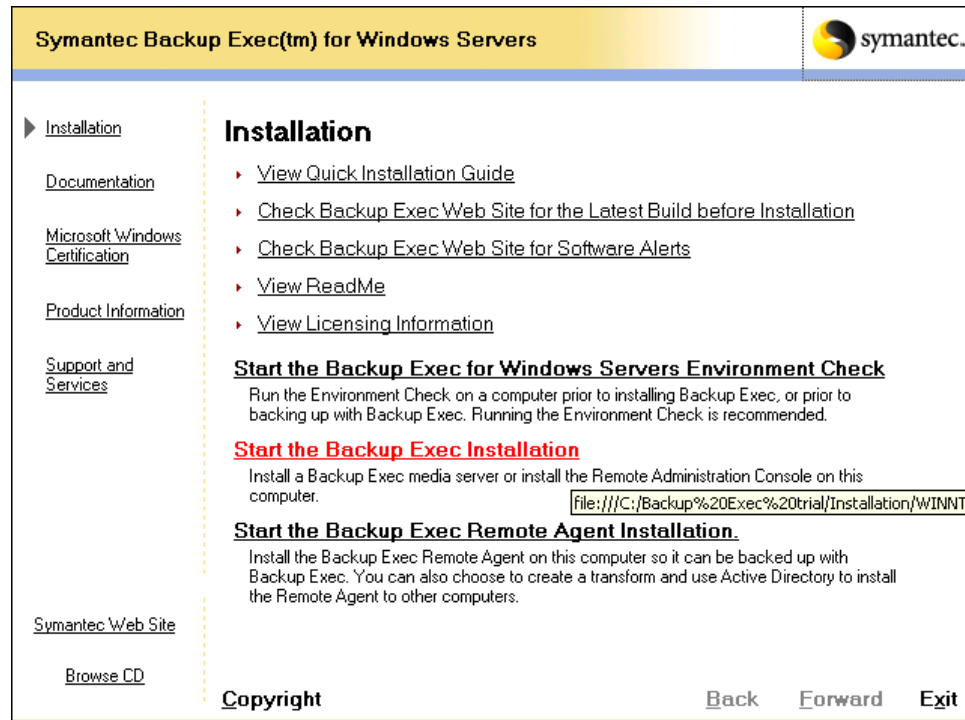


Once you have unzipped the file, open the directory and run "Browser.exe."

Backup Exec installation procedure for ProQA & AQUA



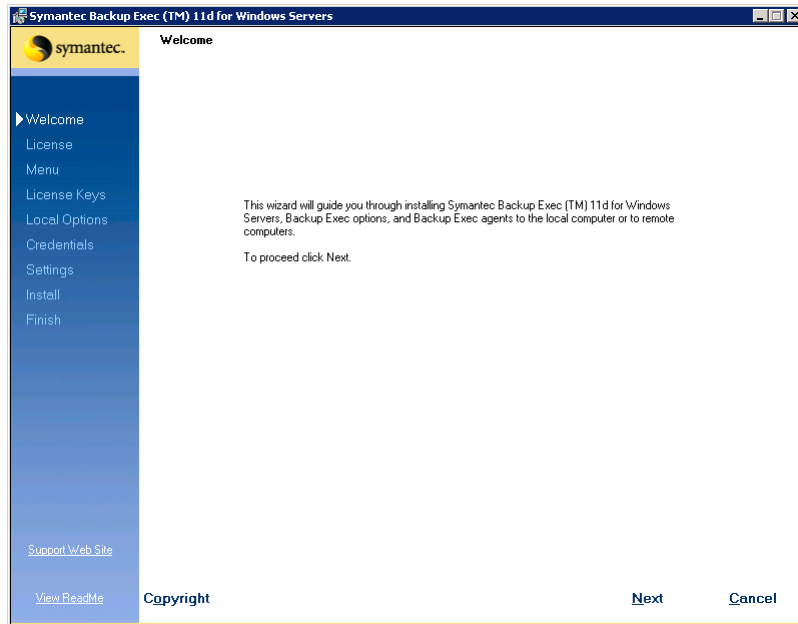
Select the appropriate language



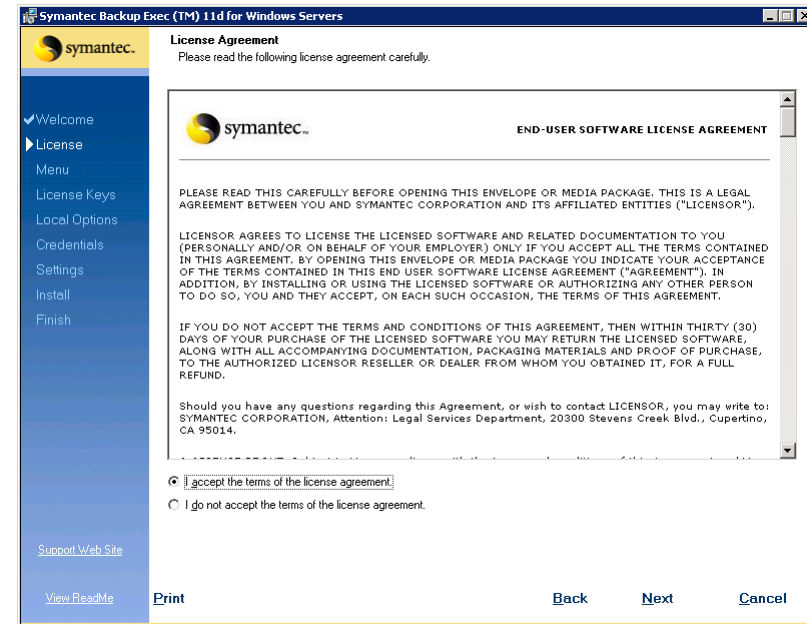
Start the Backup Exec Installation

Backup Exec installation procedure for ProQA & AQUA

Select Next

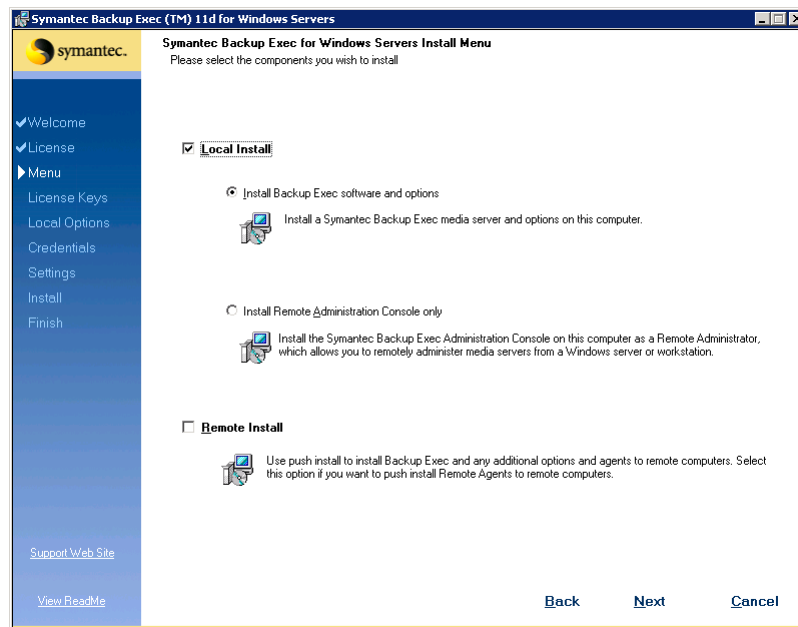


Accept the terms & Next

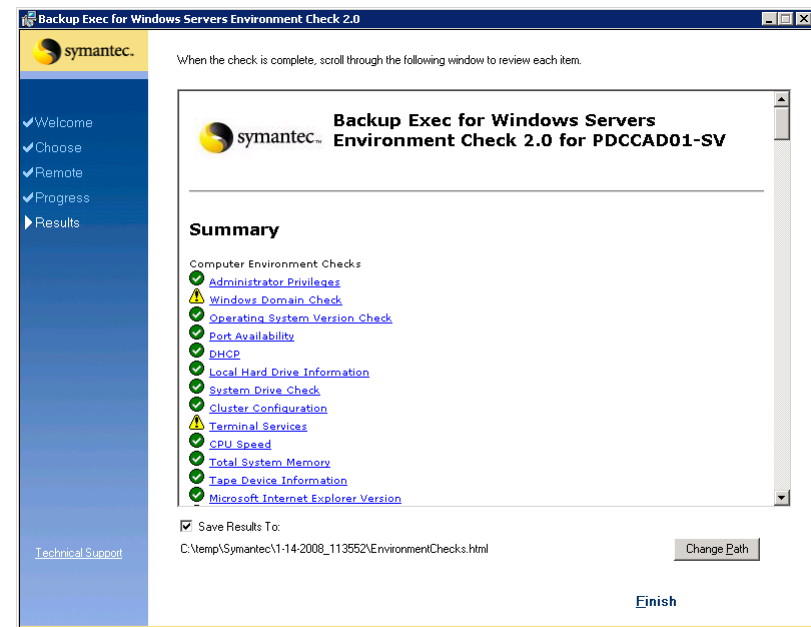


Backup Exec installation procedure for ProQA & AQUA

Select Local Installation as you are installing unexpected on this server.

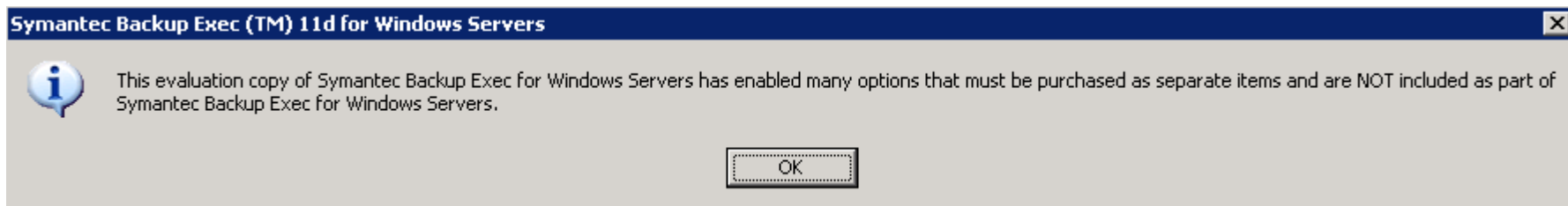
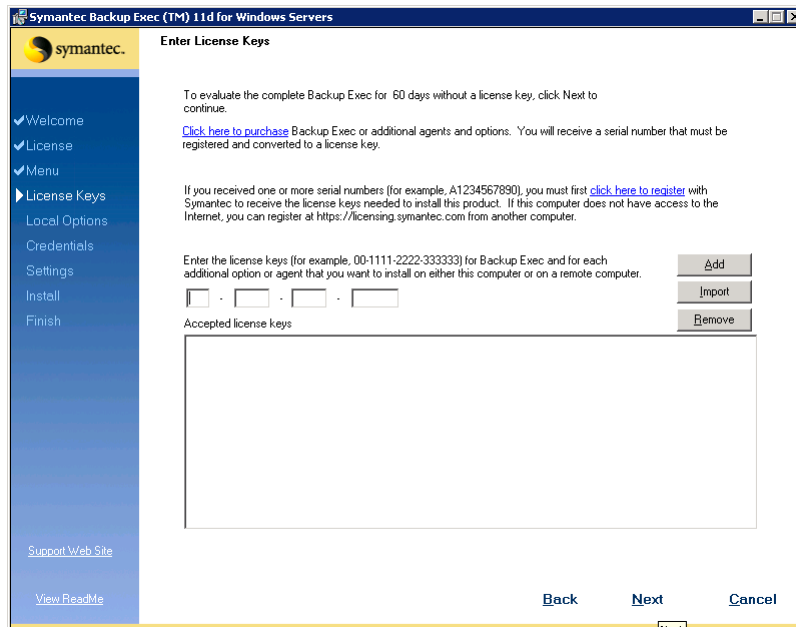


Check the Environment screen to verify that there are no critical or unexpected errors. The errors displayed here are expected.



Backup Exec installation procedure for ProQA & AQUA

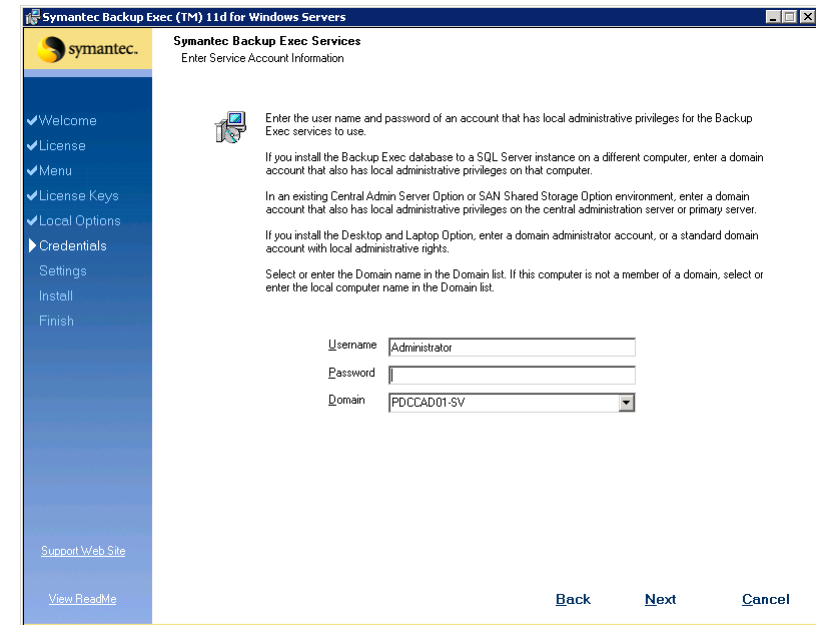
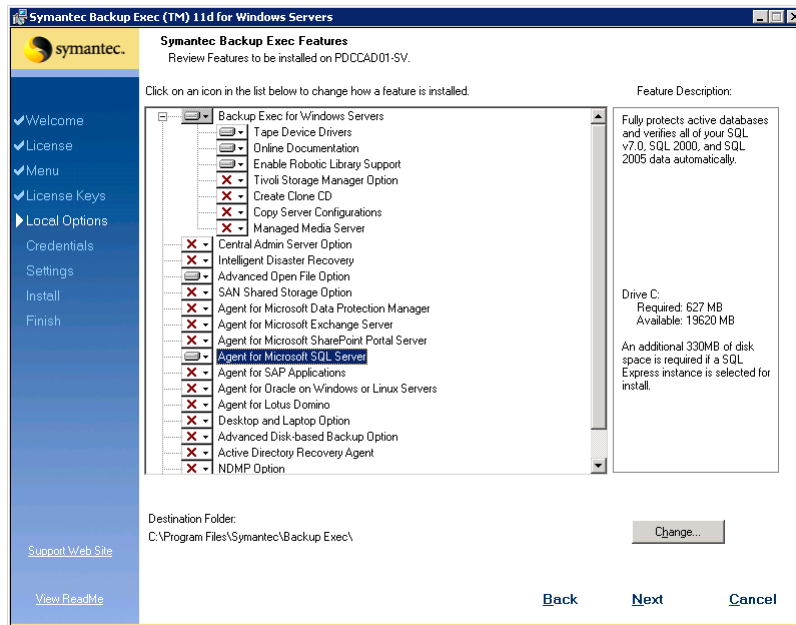
This is where you enter License keys if you have a full licensed version of the software. For demo just select “Next” with out entering license information. You will get a warning about features that you will need to purchase as extras after the evaluation.



Backup Exec installation procedure for ProQA & AQUA

For this screen it is **important** to make sure you install **Advanced open file options**. This is an additional feature on extra and is required to backup ProQA & AQUA. When purchasing the Full version make sure this option is included.

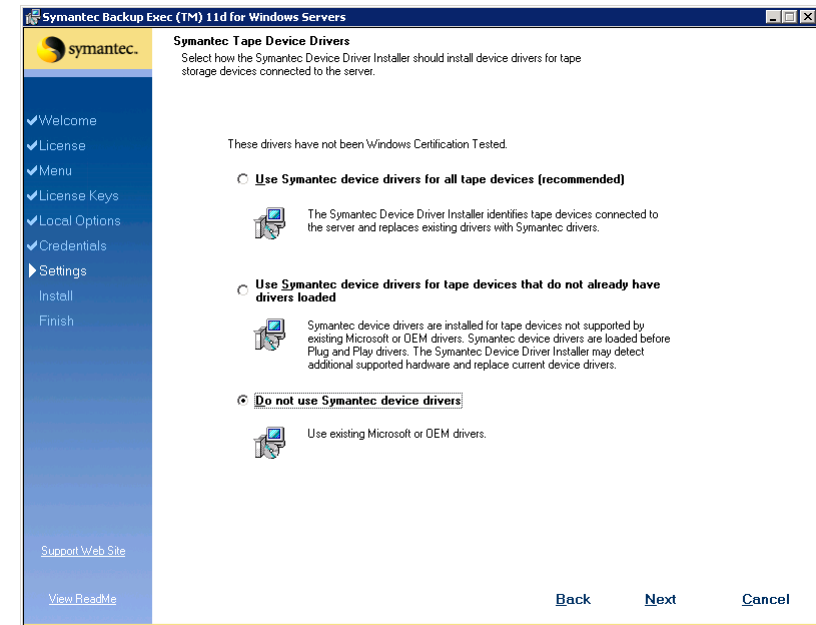
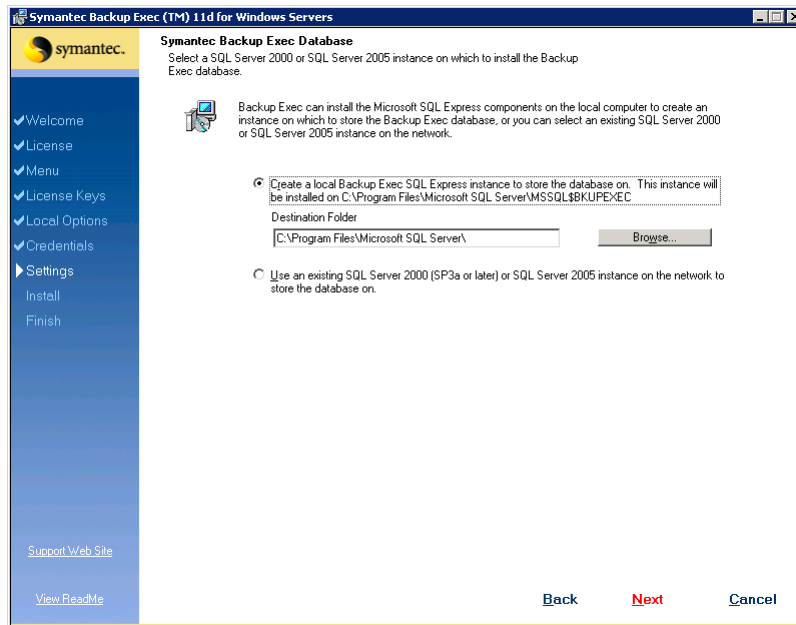
This option allows you to specify the logon the Backup will Use. Normally it needs to have Administrator rights to all Servers and shared areas that it will need to backup.



Backup Exec installation procedure for ProQA & AQUA

This allows you to choose the Database that Backup Exec will Use. It runs on an SQL database and comes with a cut down Version of SQL. Always make the selection to install this version as a separate instance. If you already have a fully licensed version of SQL you will want to install Backup Exec as a database instance on your current version.

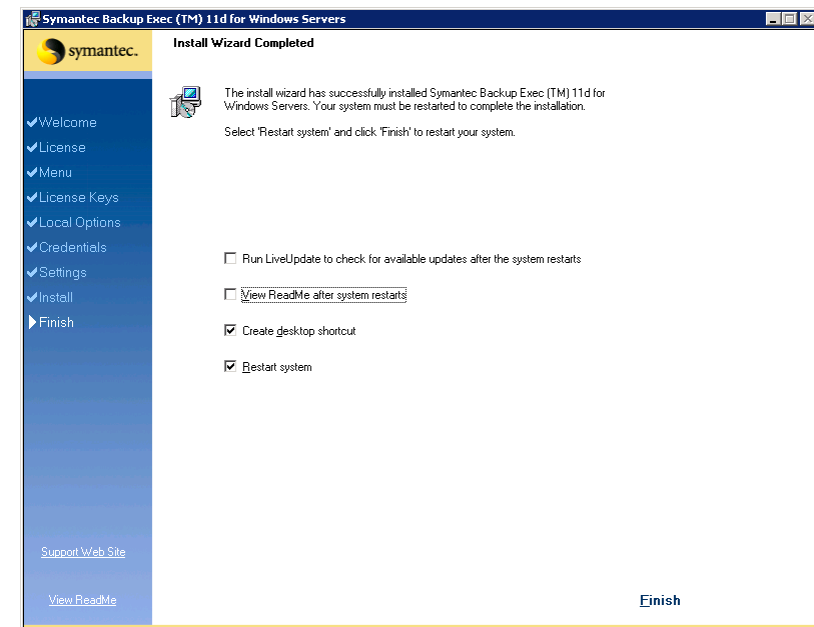
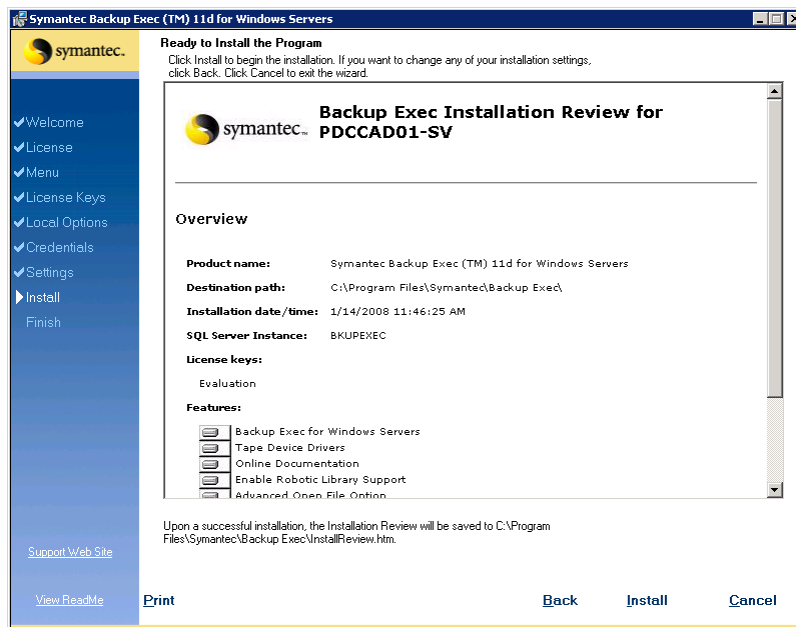
In the past there have been issues with using the Symantec device drivers, I have always found it safer not to install the Symantec drivers and use the OEM ones that come with windows server.



Backup Exec installation procedure for ProQA & AQUA

This is your last chance to check that all the options you have selected are correct before selecting Install.

End of installation Phase you will need to restart server at this point.



Backup Exec installation procedure for ProQA & AQUA



The First time you log on after installation you will get the option to do some further setup tasks

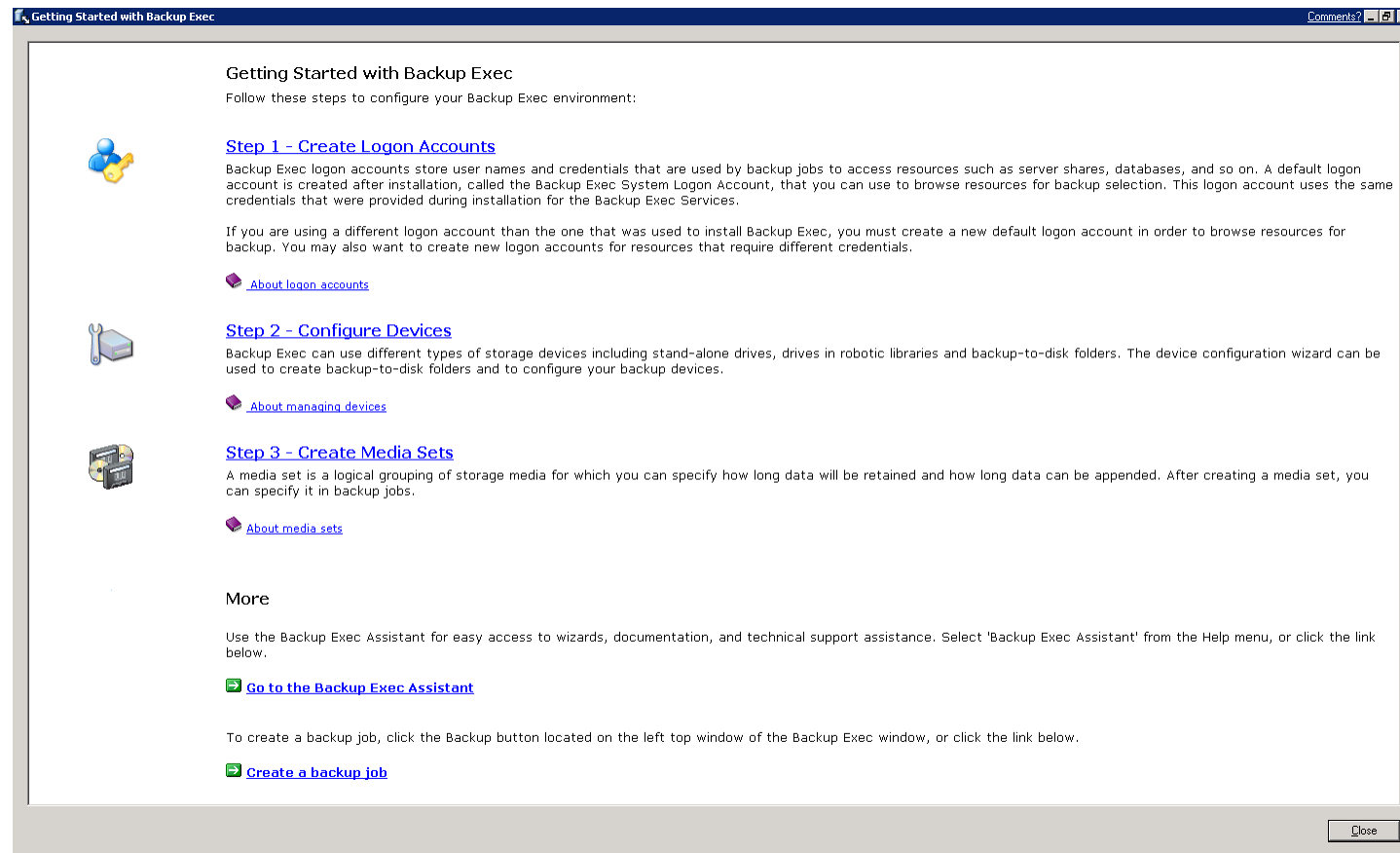


You should see the Backup Exec Icon on the desktop, just double click to run.

Backup Exec installation procedure for ProQA & AQUA


This is the screen that is displayed. If you work through this set up screen it will help you set up the basic things required for Backup Exec to function. The first option allows you to set up and edit the user accounts Backup Exec will use. Next, you can configure different backup devices. If you have a tape drive installed on the server this should have already been picked up, but if not it can be installed here. We will go through the setting up of backups to a disk drive (removable or fixed).

Finally this screen allows you to set up and modify Media sets, this is where you can group the devices into sets i.e. weekly, monthly and ect.




Getting Started with Backup Exec

Follow these steps to configure your Backup Exec environment:


 **Step 1 - Create Logon Accounts**
Backup Exec logon accounts store user names and credentials that are used by backup jobs to access resources such as server shares, databases, and so on. A default logon account is created after installation, called the Backup Exec System Logon Account, that you can use to browse resources for backup selection. This logon account uses the same credentials that were provided during installation for the Backup Exec Services.

If you are using a different logon account than the one that was used to install Backup Exec, you must create a new default logon account in order to browse resources for backup. You may also want to create new logon accounts for resources that require different credentials.

[About logon accounts](#)

 **Step 2 - Configure Devices**
Backup Exec can use different types of storage devices including stand-alone drives, drives in robotic libraries and backup-to-disk folders. The device configuration wizard can be used to create backup-to-disk folders and to configure your backup devices.

[About managing devices](#)

 **Step 3 - Create Media Sets**
A media set is a logical grouping of storage media for which you can specify how long data will be retained and how long data can be appended. After creating a media set, you can specify it in backup jobs.

[About media sets](#)

More

Use the Backup Exec Assistant for easy access to wizards, documentation, and technical support assistance. Select 'Backup Exec Assistant' from the Help menu, or click the link below.

[Go to the Backup Exec Assistant](#)

To create a backup job, click the Backup button located on the left top window of the Backup Exec window, or click the link below.

[Create a backup job](#)

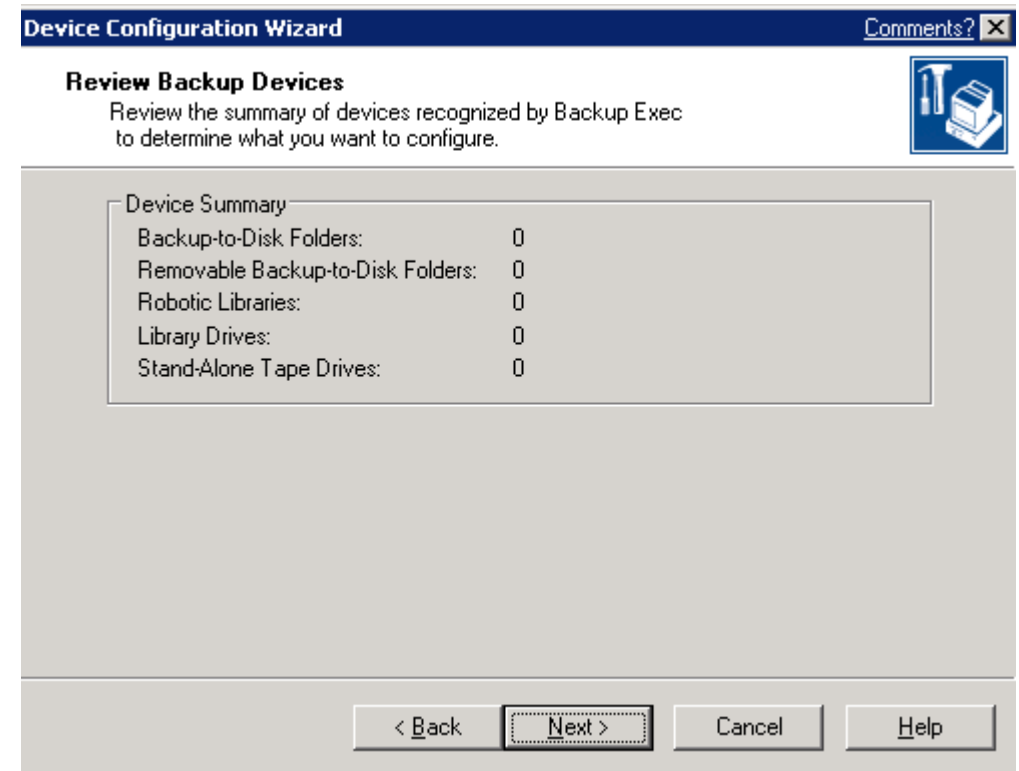
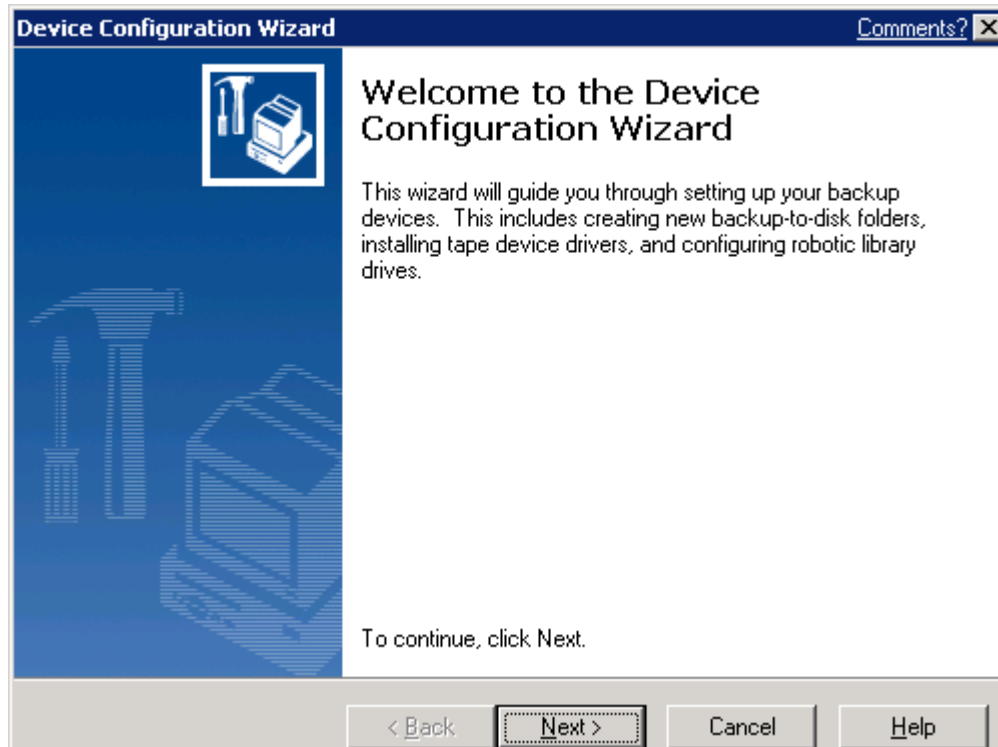
Close

Backup Exec installation procedure for ProQA & AQUA

Select Step 2 – Configure Device

Next to begin

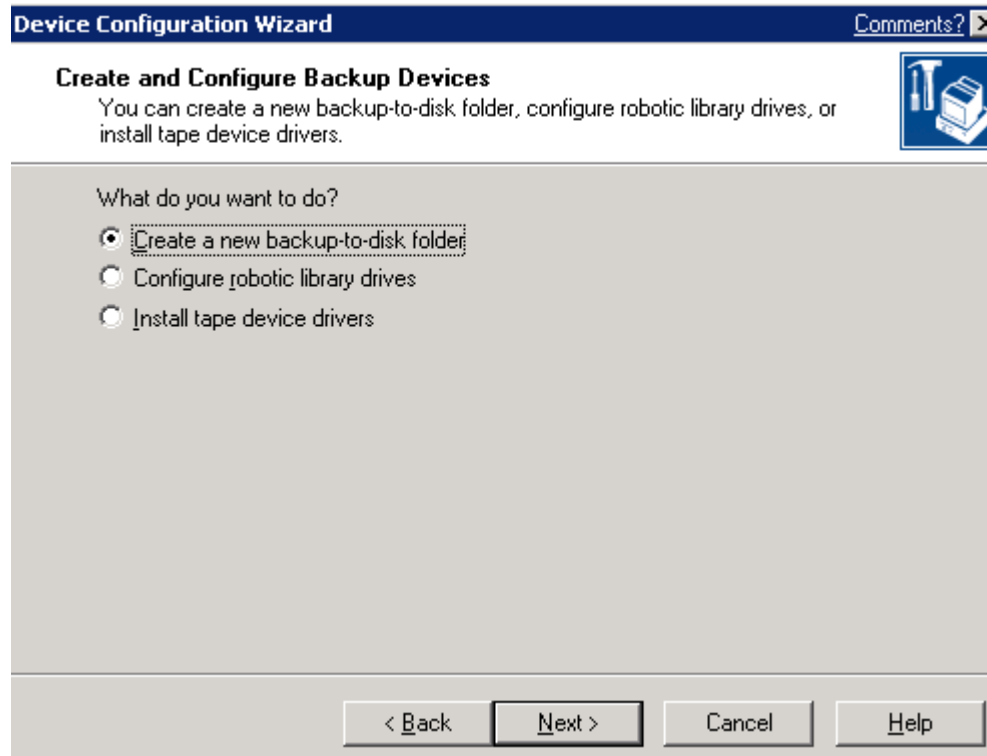
This screen tells you the devices already configured



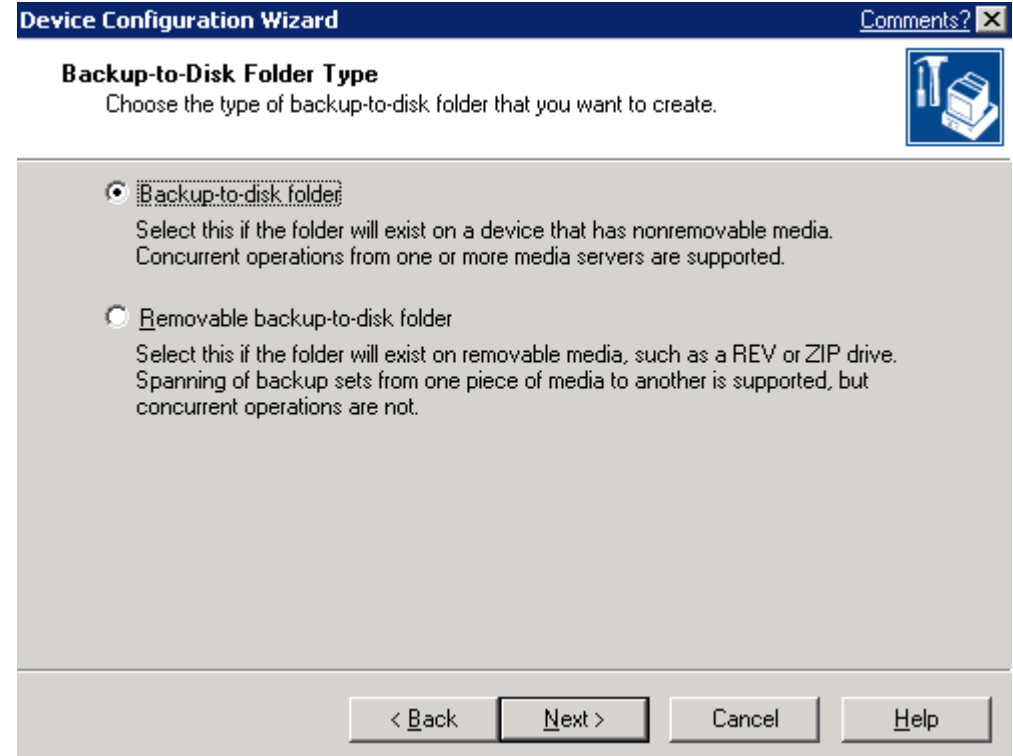
Backup Exec installation procedure for ProQA & AQUA



Select to create Backup to disk folder



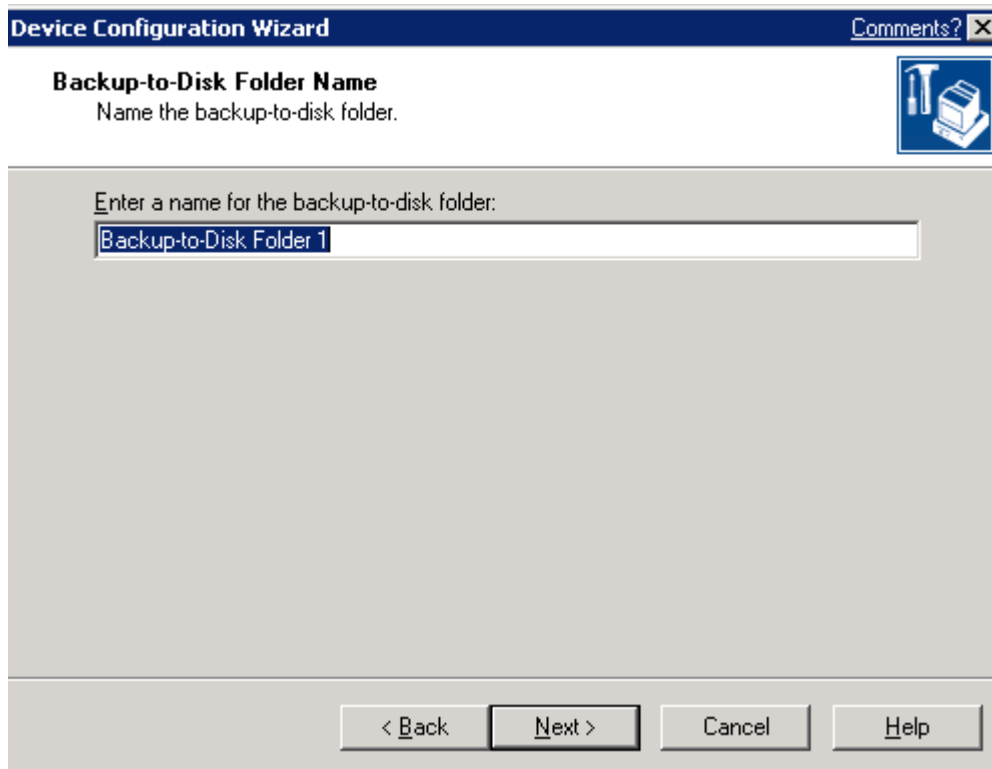
Choose Backup to disk folder in this case



Backup Exec installation procedure for ProQA & AQUA

Give this folder a name that will be used to Reference it in Backup Exec

Select a path and file name

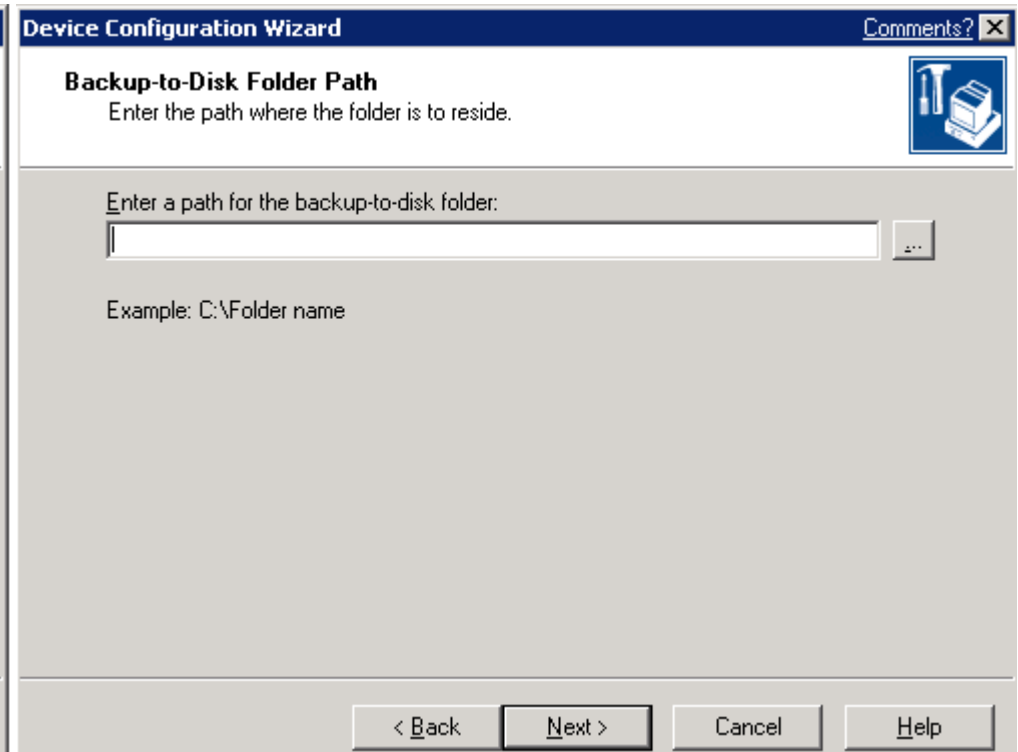


Device Configuration Wizard Comments? X

Backup-to-Disk Folder Name
Name the backup-to-disk folder.

Enter a name for the backup-to-disk folder:

< Back Next > Cancel Help



Device Configuration Wizard Comments? X

Backup-to-Disk Folder Path
Enter the path where the folder is to reside.

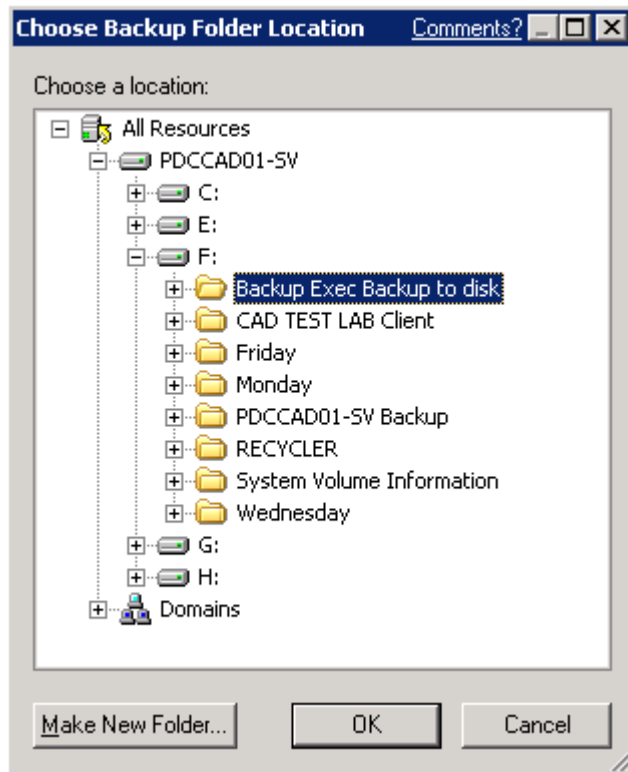
Enter a path for the backup-to-disk folder:

Example: C:\Folder name

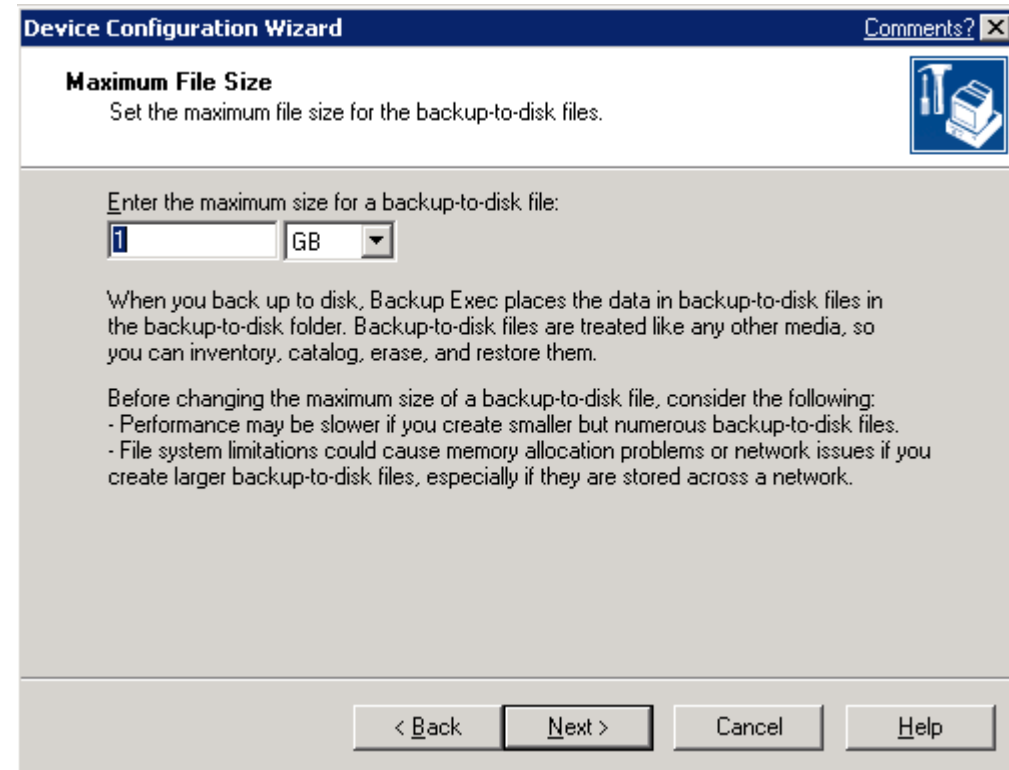
< Back Next > Cancel Help

Backup Exec installation procedure for ProQA & AQUA

Select from file list



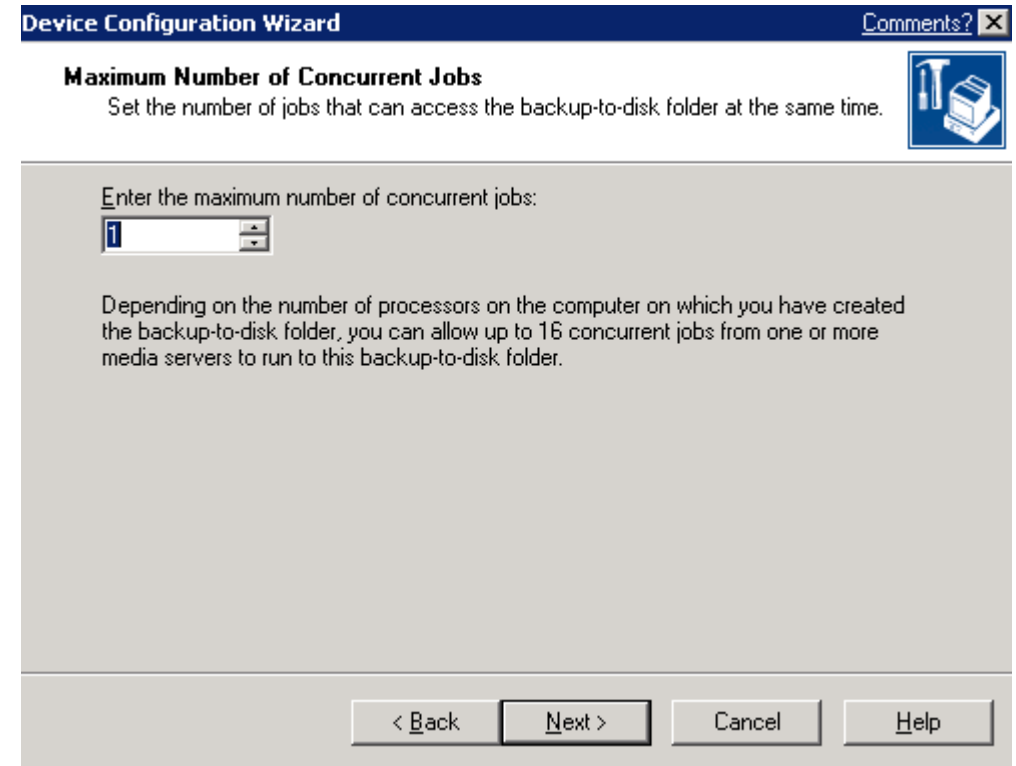
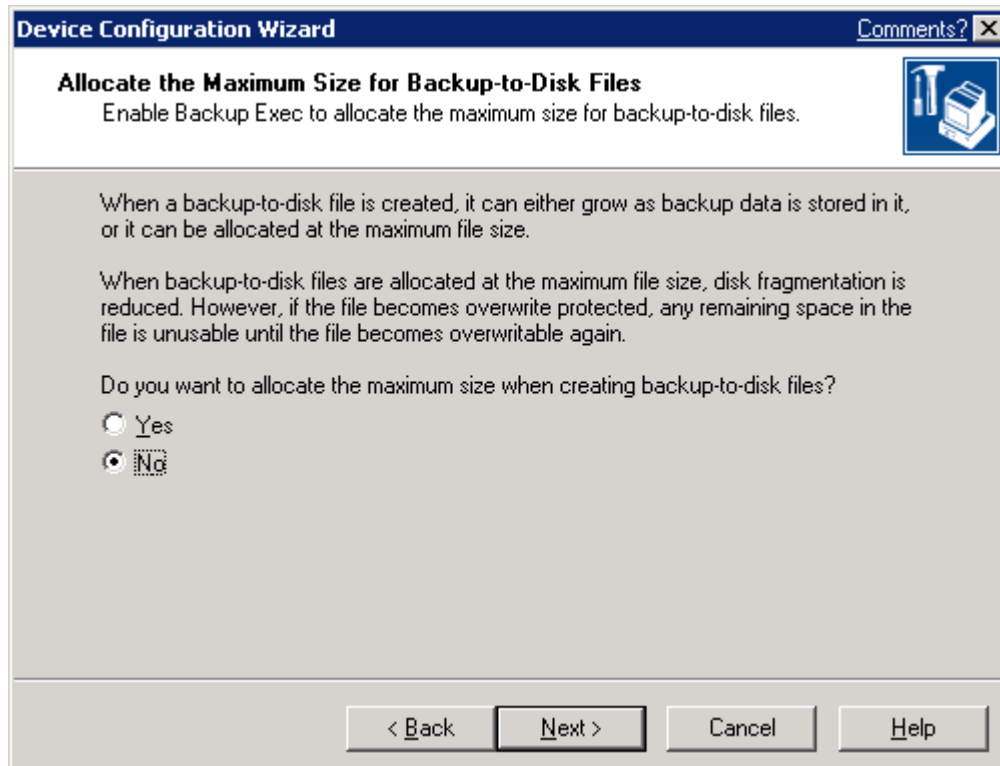
Select the size you want each backup file on disk to be
The bigger the data backed up the bigger this file should be. Between 1 – 10
Gig we would advise.



Backup Exec installation procedure for ProQA & AQUA

Enter No to maximum size

Enter the number of current jobs (depending on number of Processors server has)

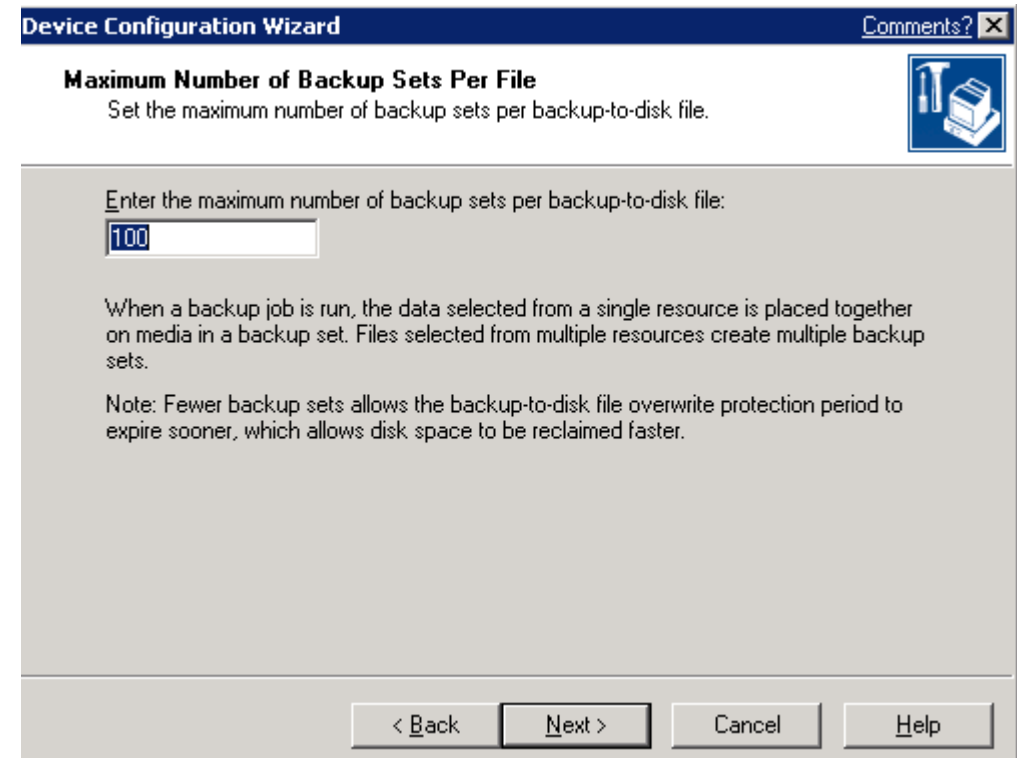
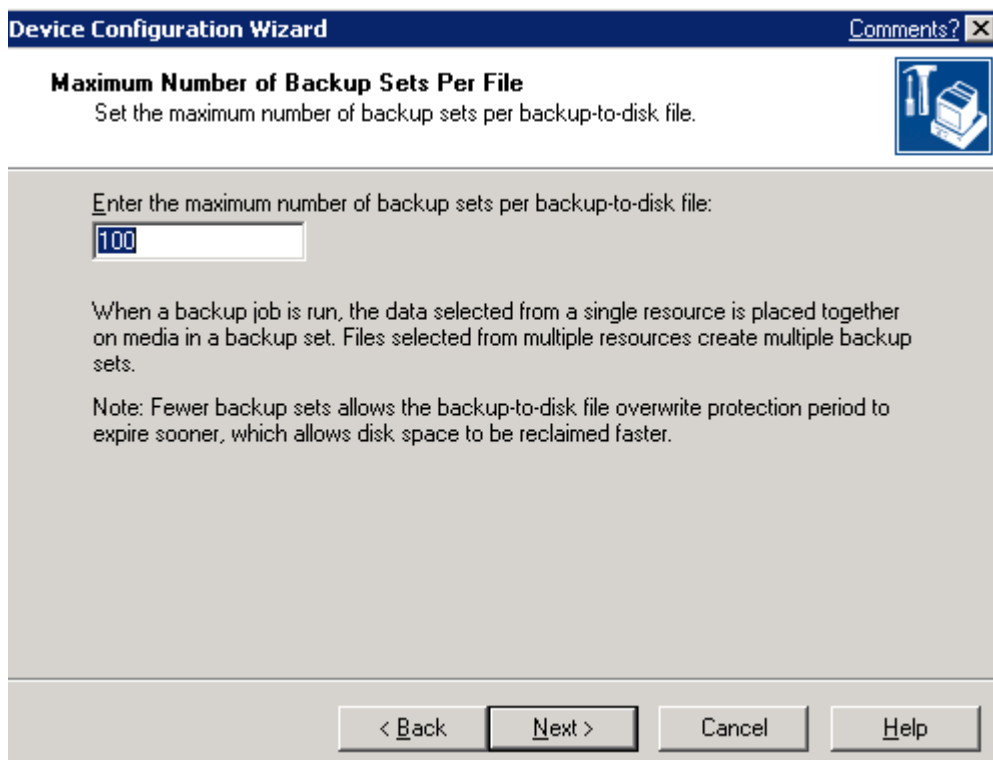


Backup Exec installation procedure for ProQA & AQUA



Select the number of backup sets you want on disk

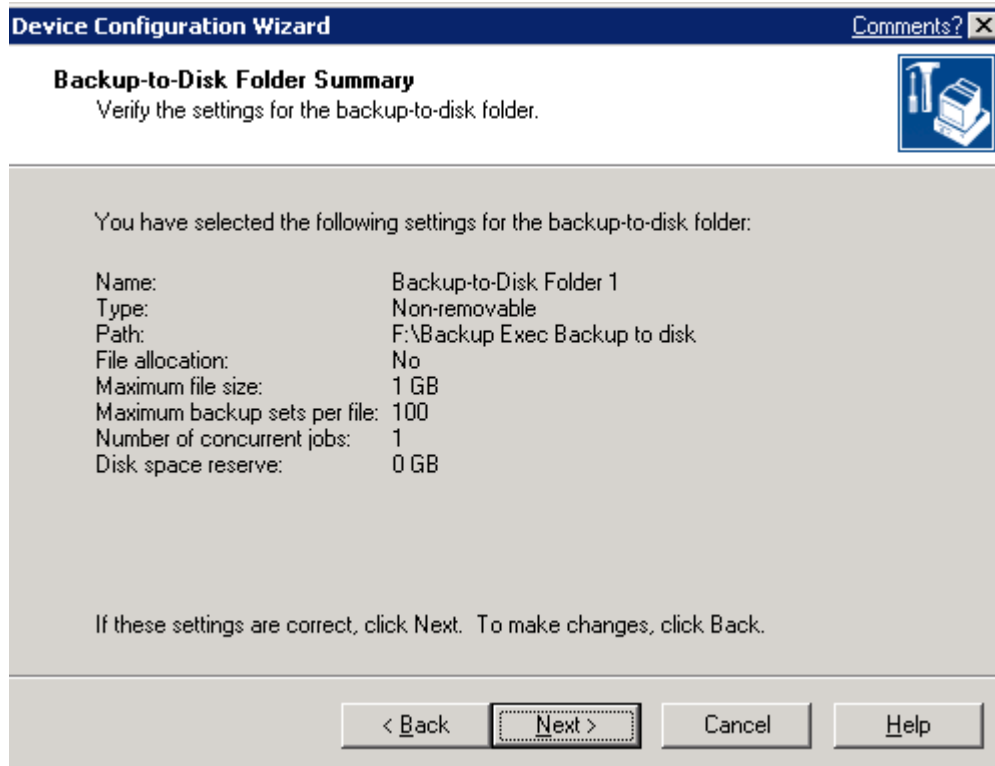
Enter the amount of disk space to allocate (0 means no Restrictions)



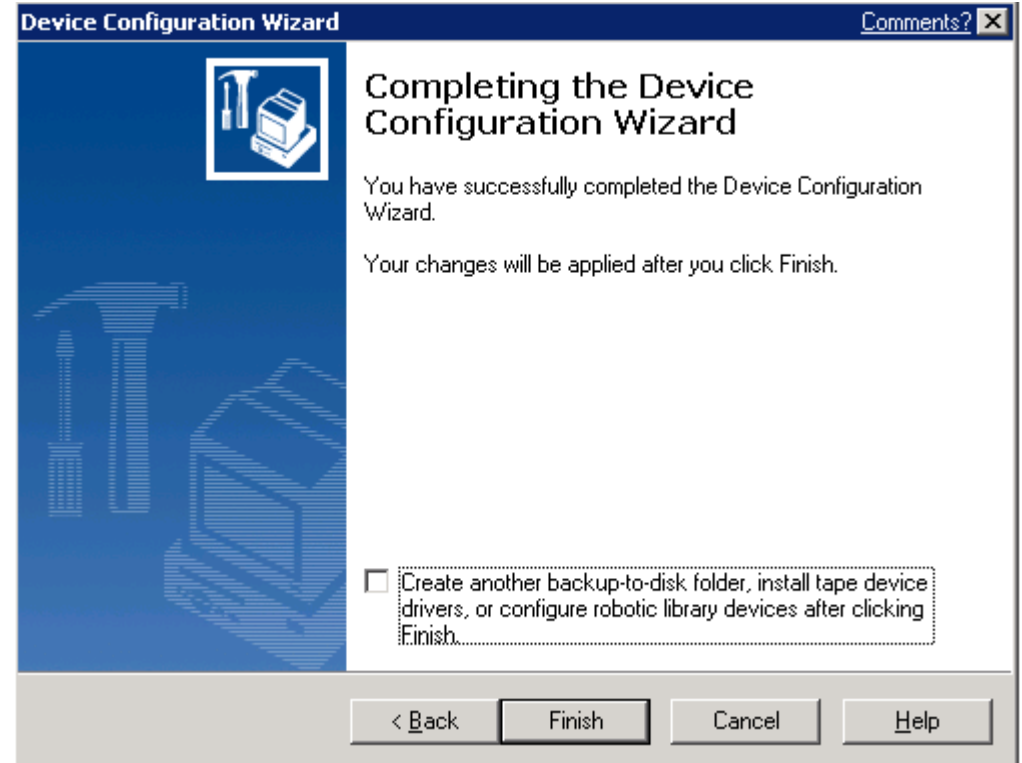
Backup Exec installation procedure for ProQA & AQUA



Check details are OK then Next

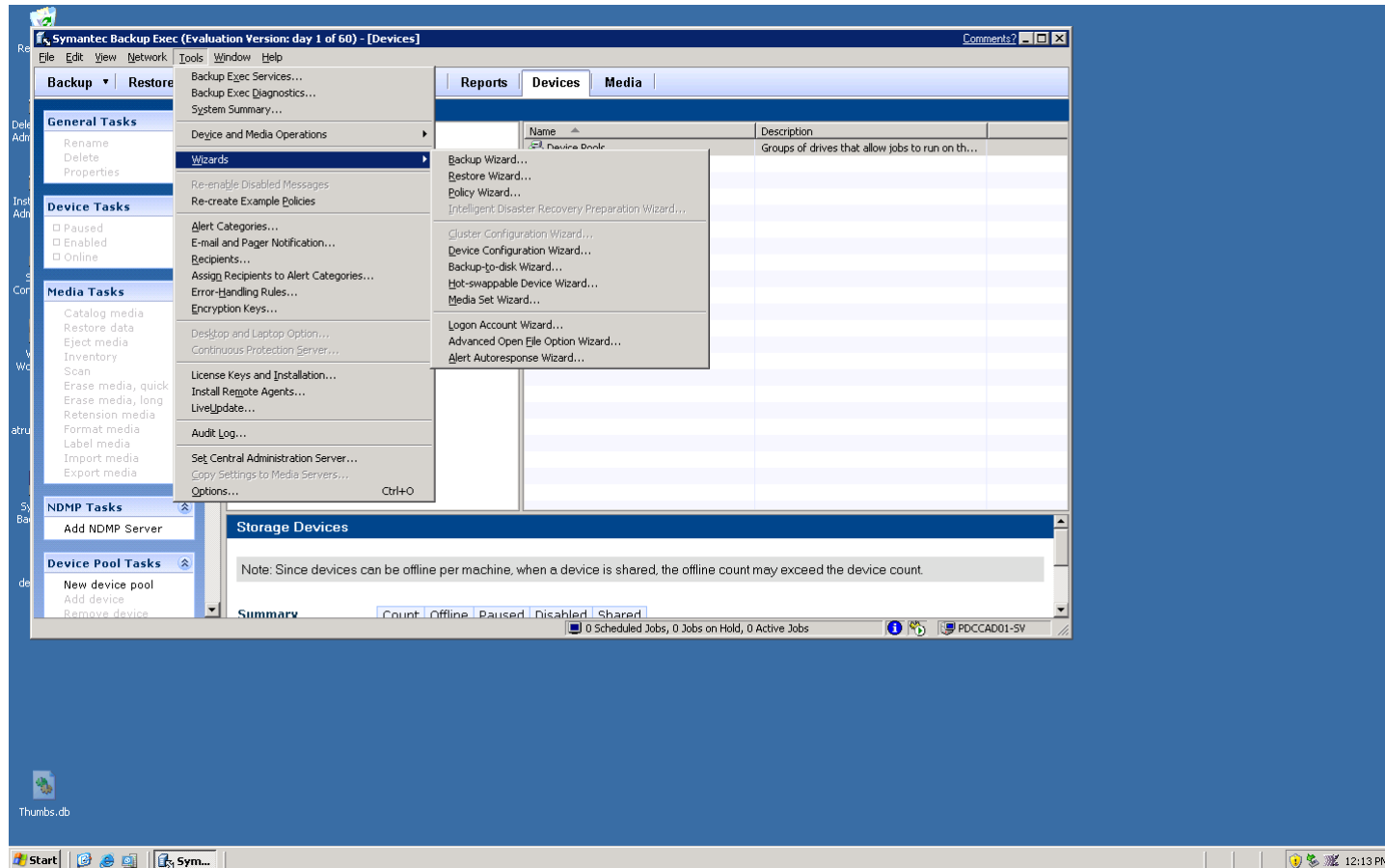


Select Finish



Backup Exec installation procedure for ProQA & AQUA

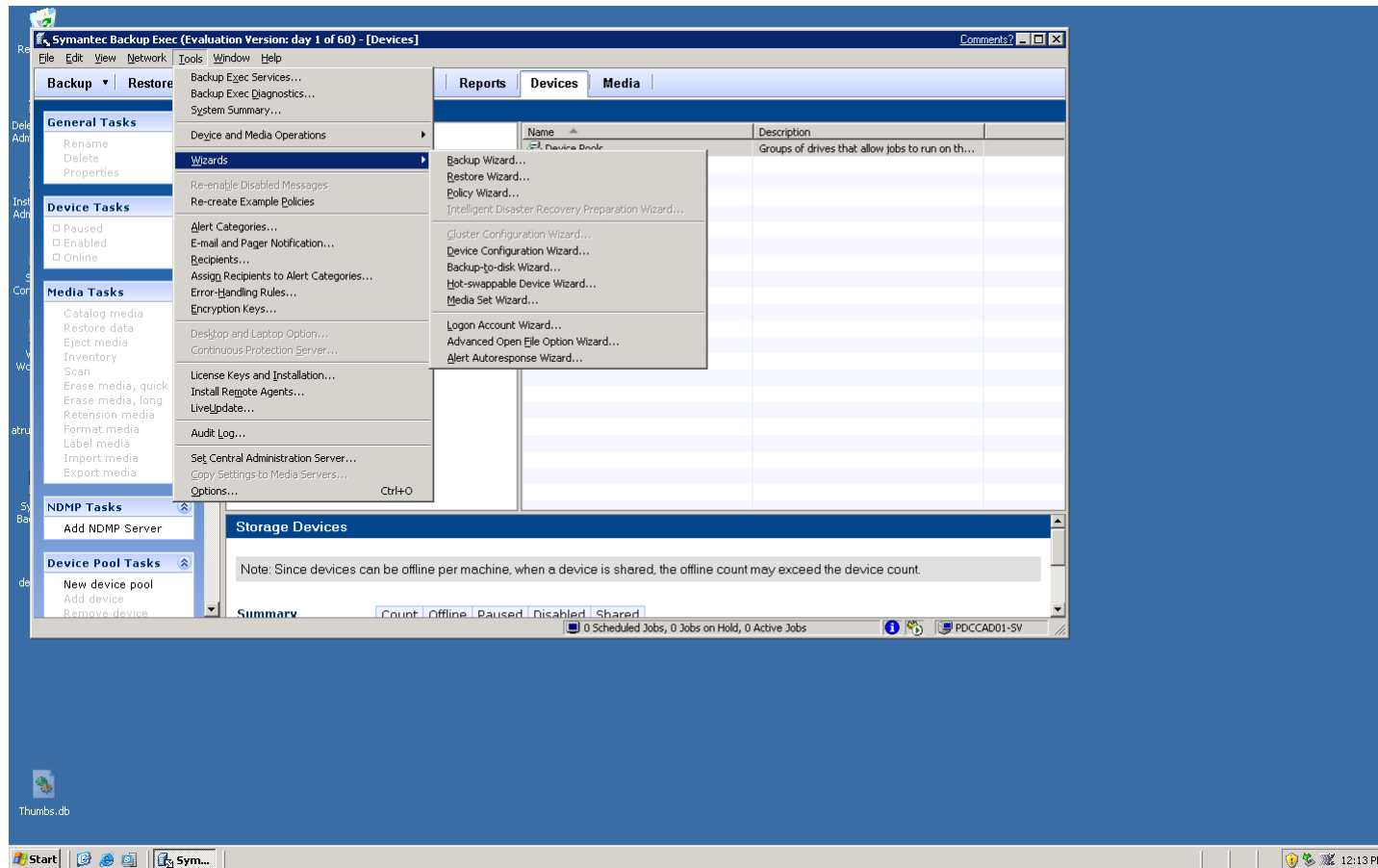
Once you have done this you can close the Initial setup screen down. All these configurations can be made by going to the Tools/Wizards and selecting the appropriate wizard.



Backup Exec installation procedure for ProQA & AQUA

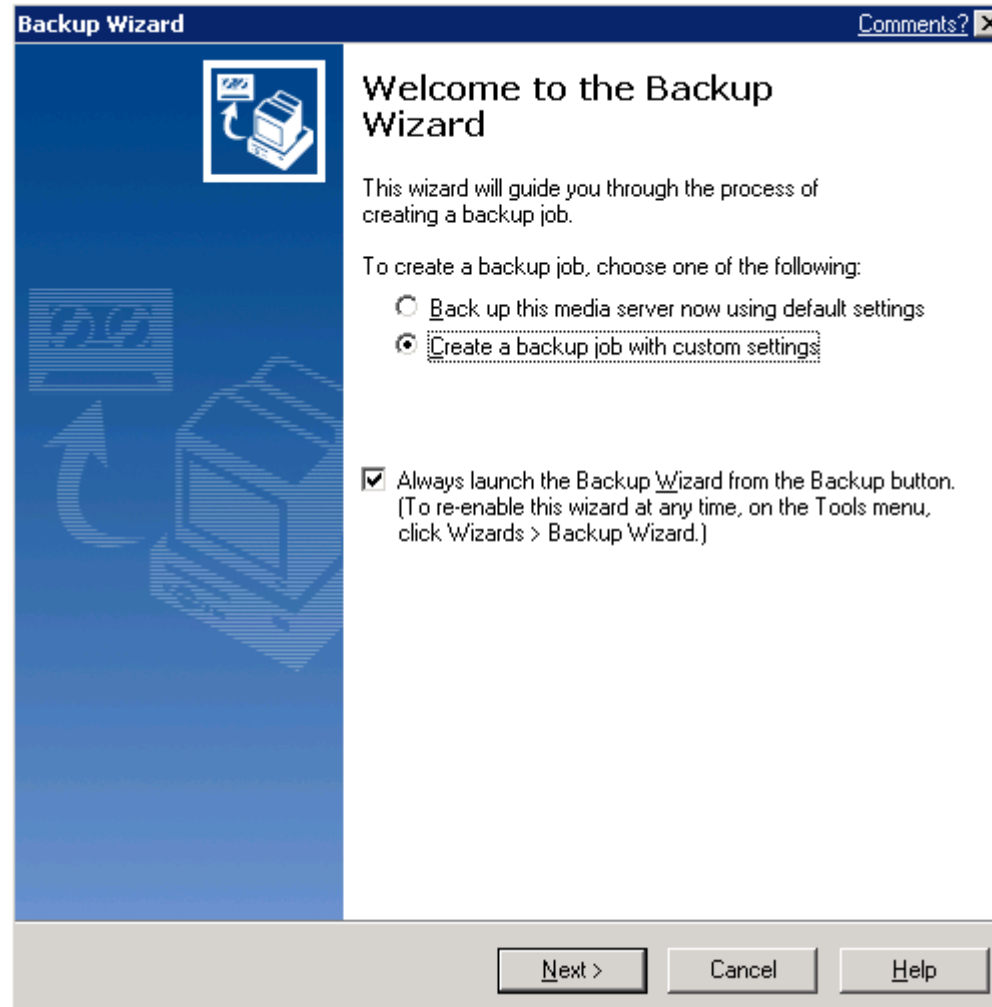
Setting up a Backup Job for ProQA & AQUA

Select Backup wizard form the tools\wizard menu



Backup Exec installation procedure for ProQA & AQUA

Select - **Create a backup job**

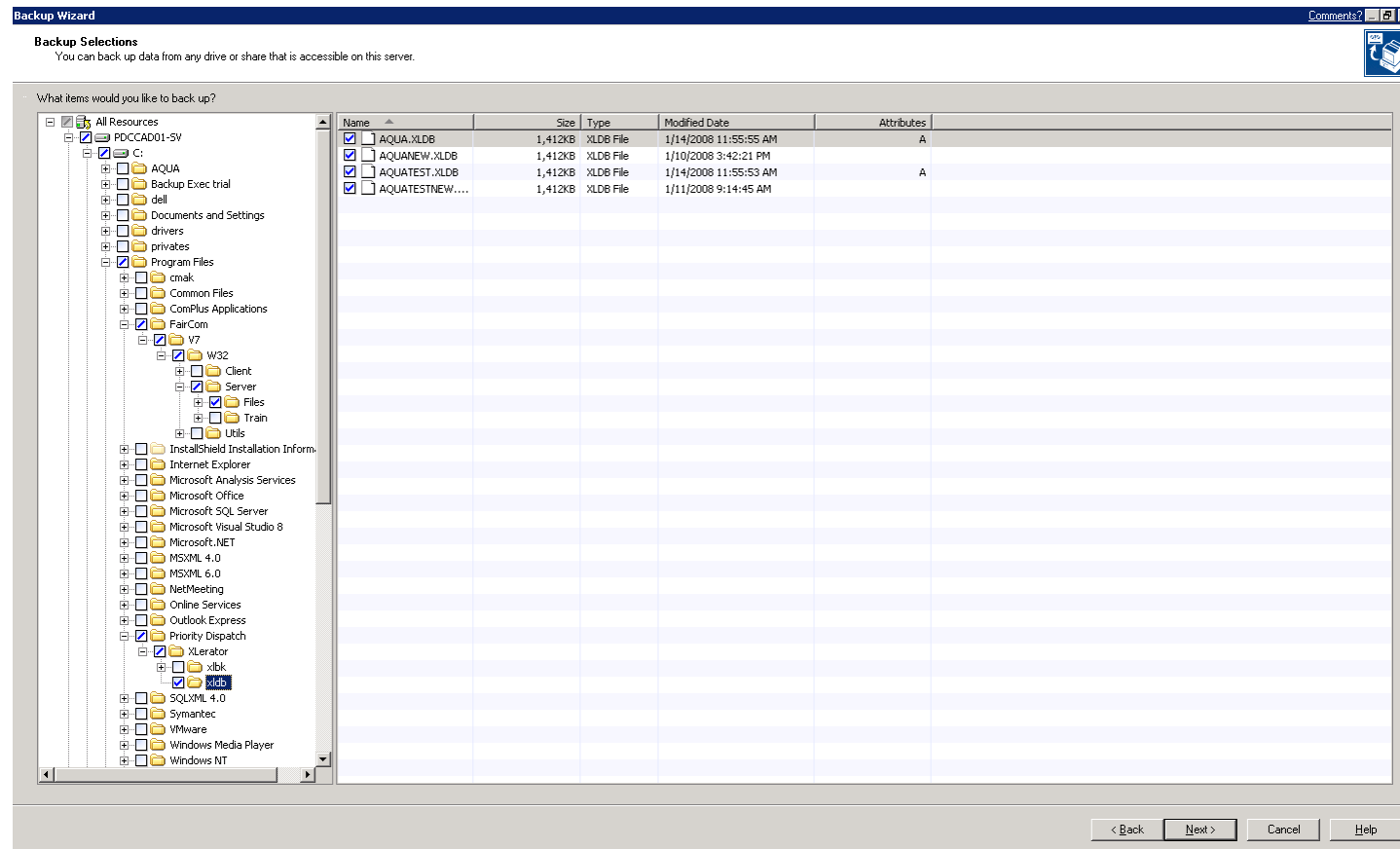


Backup Exec installation procedure for ProQA & AQUA

Next select what you want to backup.

For ProQA you need to select “Program files\Faircom\V7\W32\Server\Files” if you use Faircom or, if not, you need to backup wherever the ProQA database is located. This can be found by running the ProQA Configuration Utility.

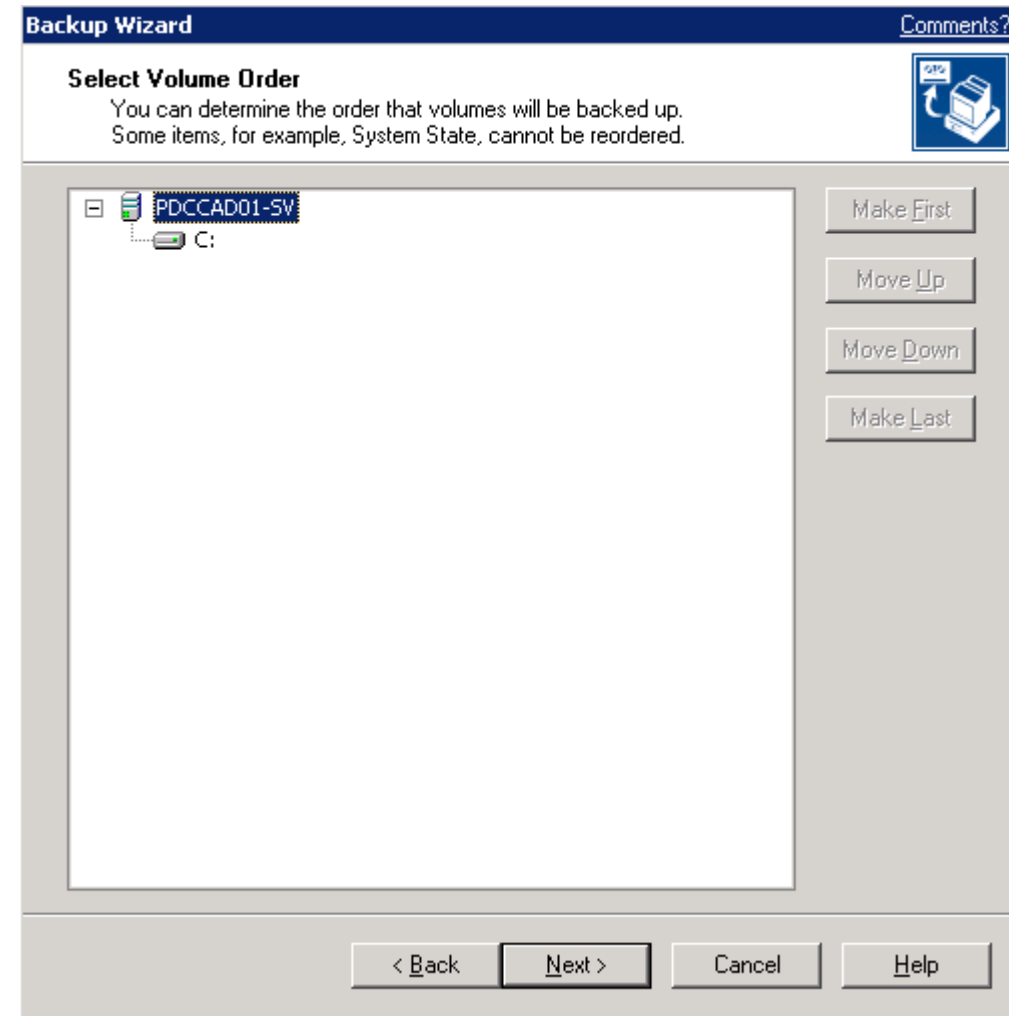
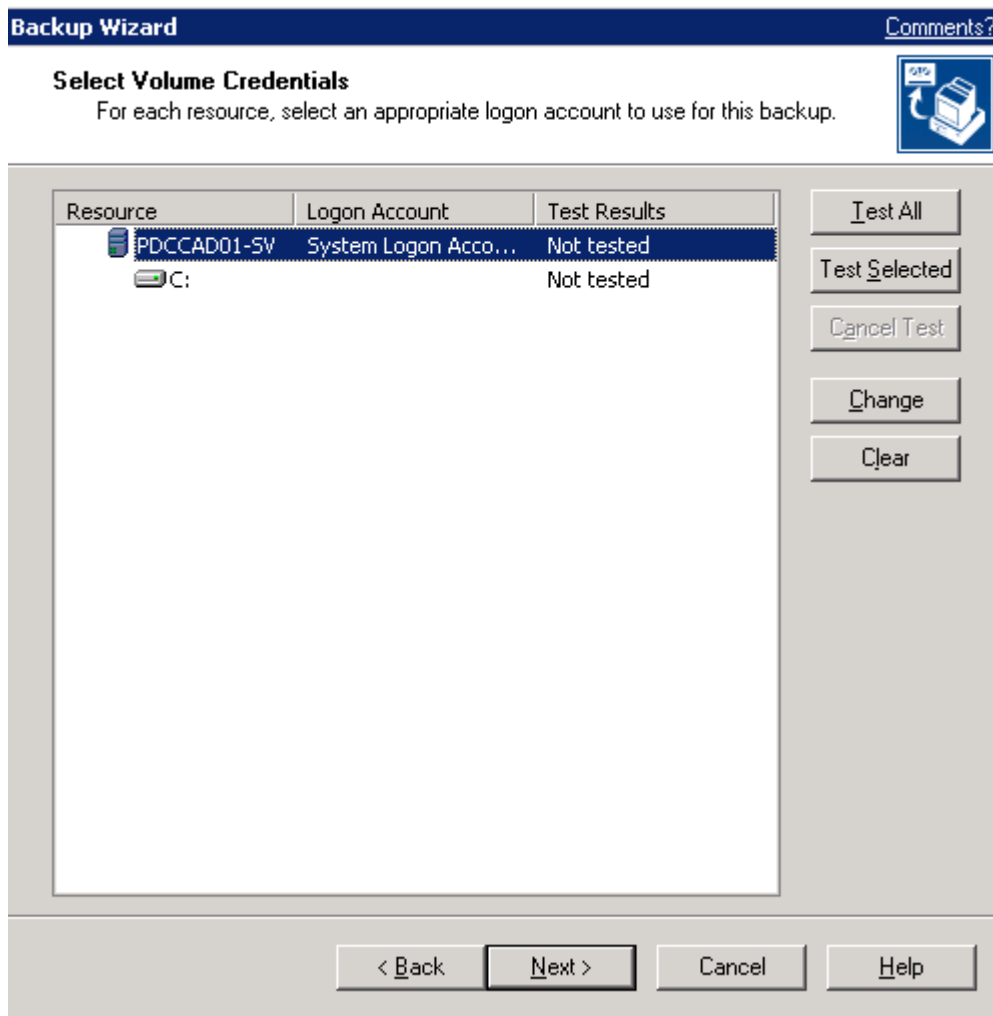
For AQUA you need to select “Program files\Priority Dispatch\Xlerator\xldb” as this is where the database files are kept. This may be on a pc or on the server.



Backup Exec installation procedure for ProQA & AQUA

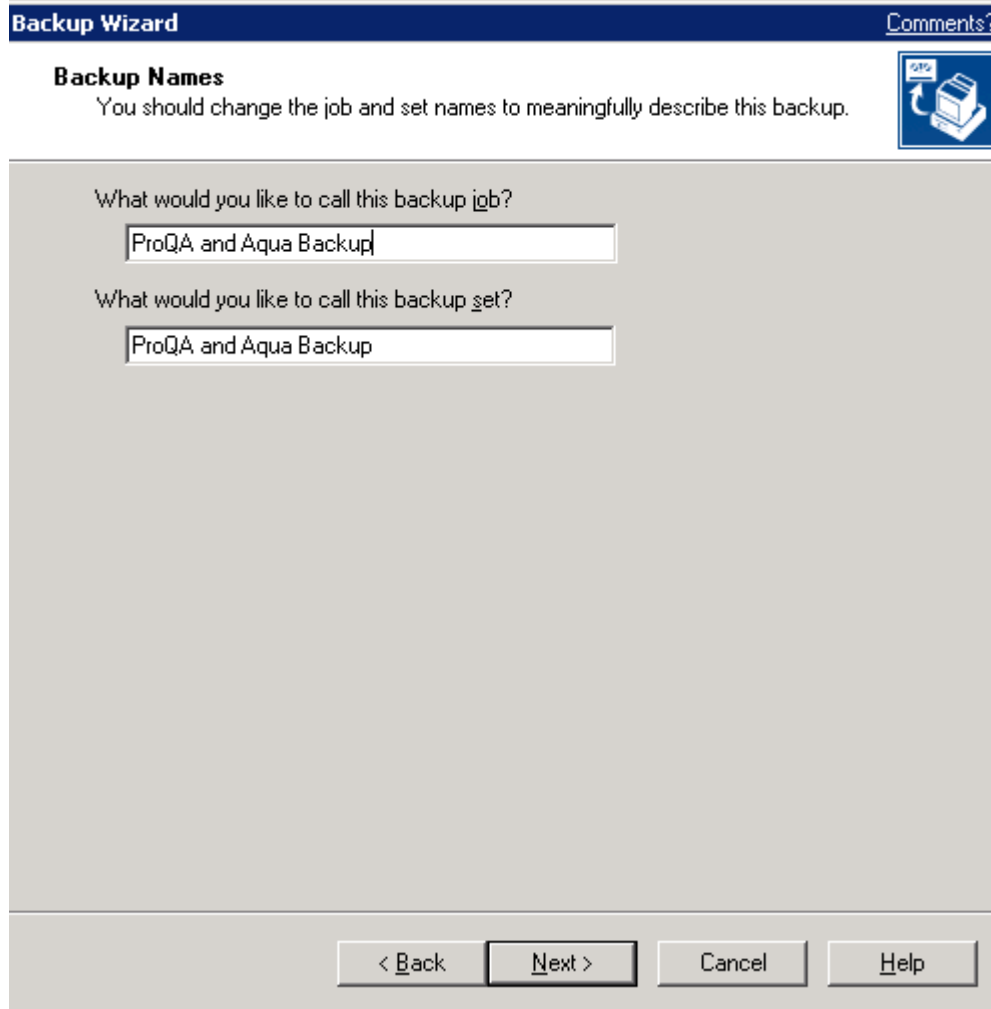
Next the logon account settings should be tested to ensure BackExec has access to backup the selected directory. Select “test all” and check that the test results are OK.

If you are backing up more than one server volume, this gives the option to choose the order they are processed.



Backup Exec installation procedure for ProQA & AQUA

Give the backup a logical name.



Backup Wizard [Comments?](#)

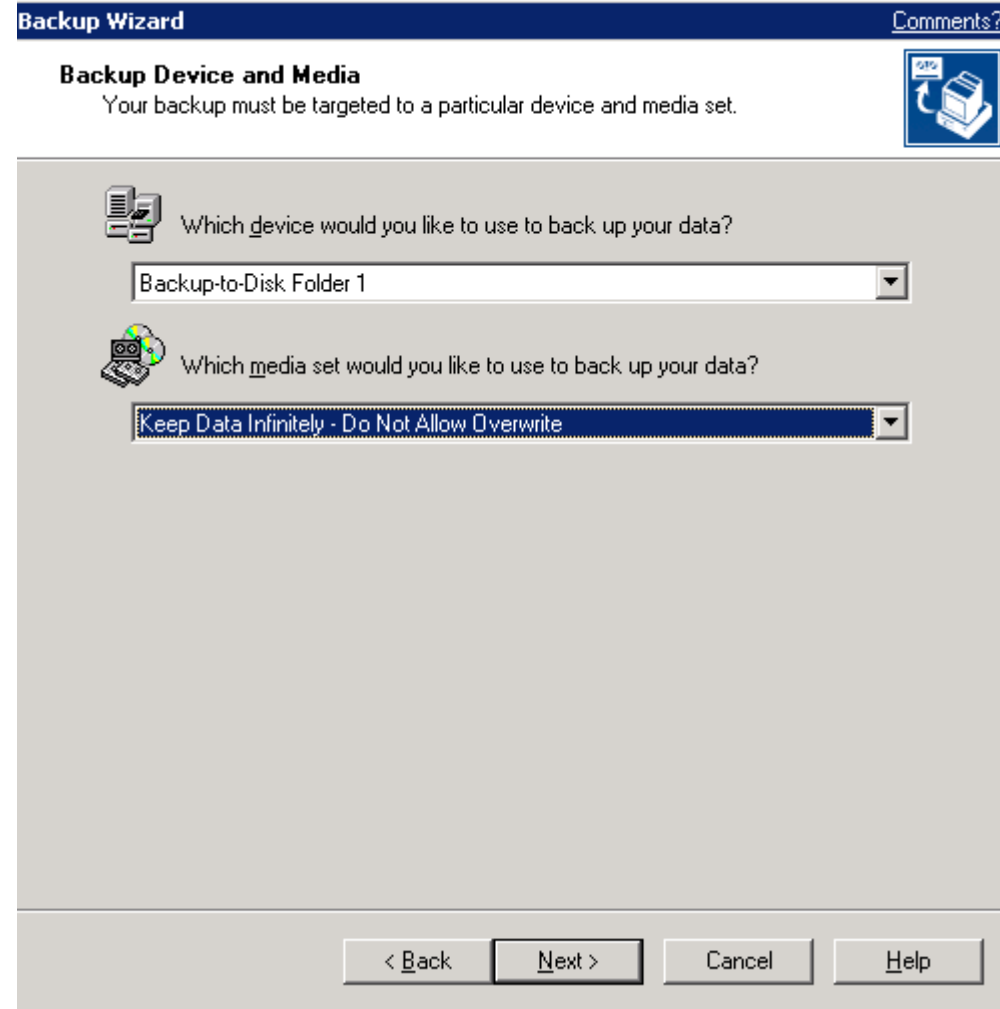
Backup Names
You should change the job and set names to meaningfully describe this backup.

What would you like to call this backup job?

What would you like to call this backup set?

< Back Next > Cancel Help

Select where you want to back up to. The top drop down list is a list of all available backup devices/locations.



Backup Wizard [Comments?](#)

Backup Device and Media
Your backup must be targeted to a particular device and media set.

Which device would you like to use to back up your data?

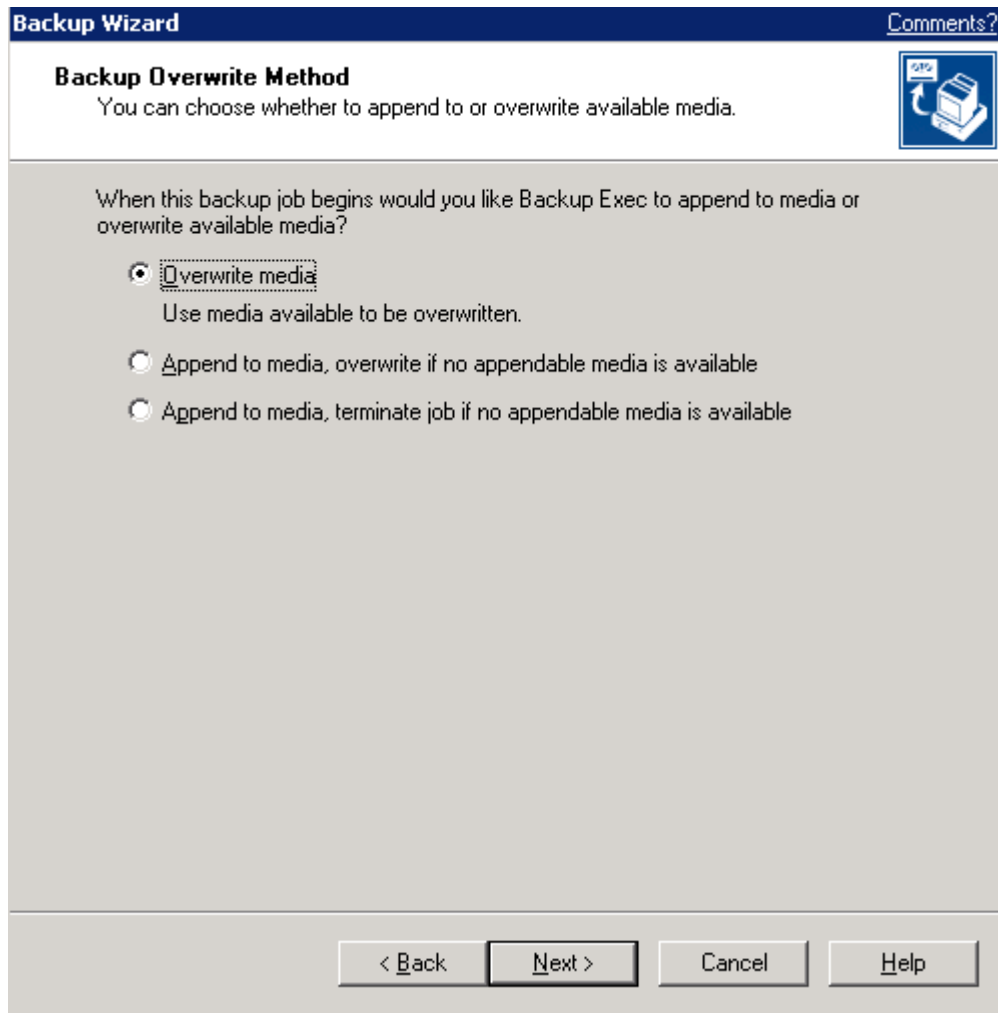
Which media set would you like to use to back up your data?

< Back Next > Cancel Help

Backup Exec installation procedure for ProQA & AQUA

Mainly for tape, do you want to overwrite any information already on tape or add to the end of the data already there.

Select the type of Backup you require; full or incremental etc and also choose if you want to run verify or not.



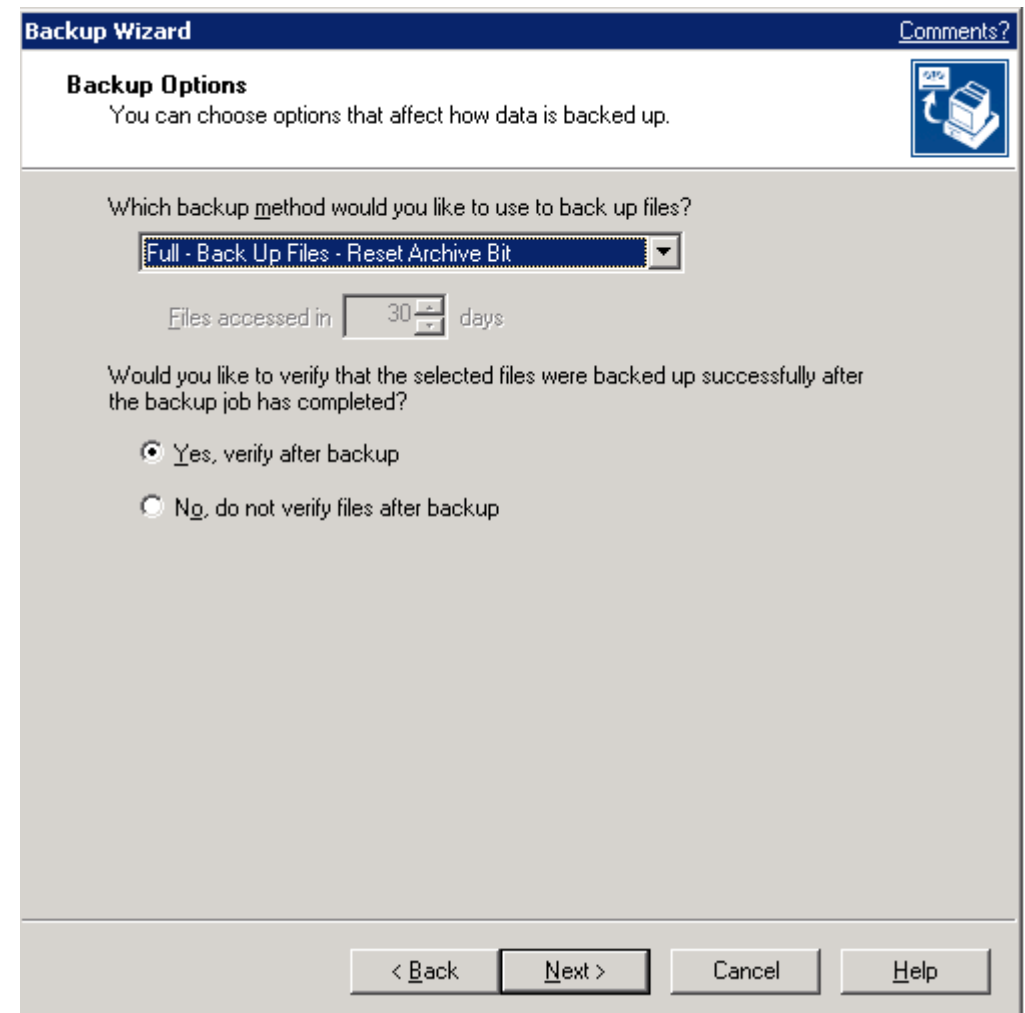
Backup Wizard Comments?

Backup Overwrite Method
You can choose whether to append to or overwrite available media.

When this backup job begins would you like Backup Exec to append to media or overwrite available media?

- Overwrite media**
Use media available to be overwritten.
- Append to media, overwrite if no appendable media is available
- Append to media, terminate job if no appendable media is available

< Back Next > Cancel Help



Backup Wizard Comments?

Backup Options
You can choose options that affect how data is backed up.

Which backup method would you like to use to back up files?

Full - Back Up Files - Reset Archive Bit

Files accessed in 30 days

Would you like to verify that the selected files were backed up successfully after the backup job has completed?

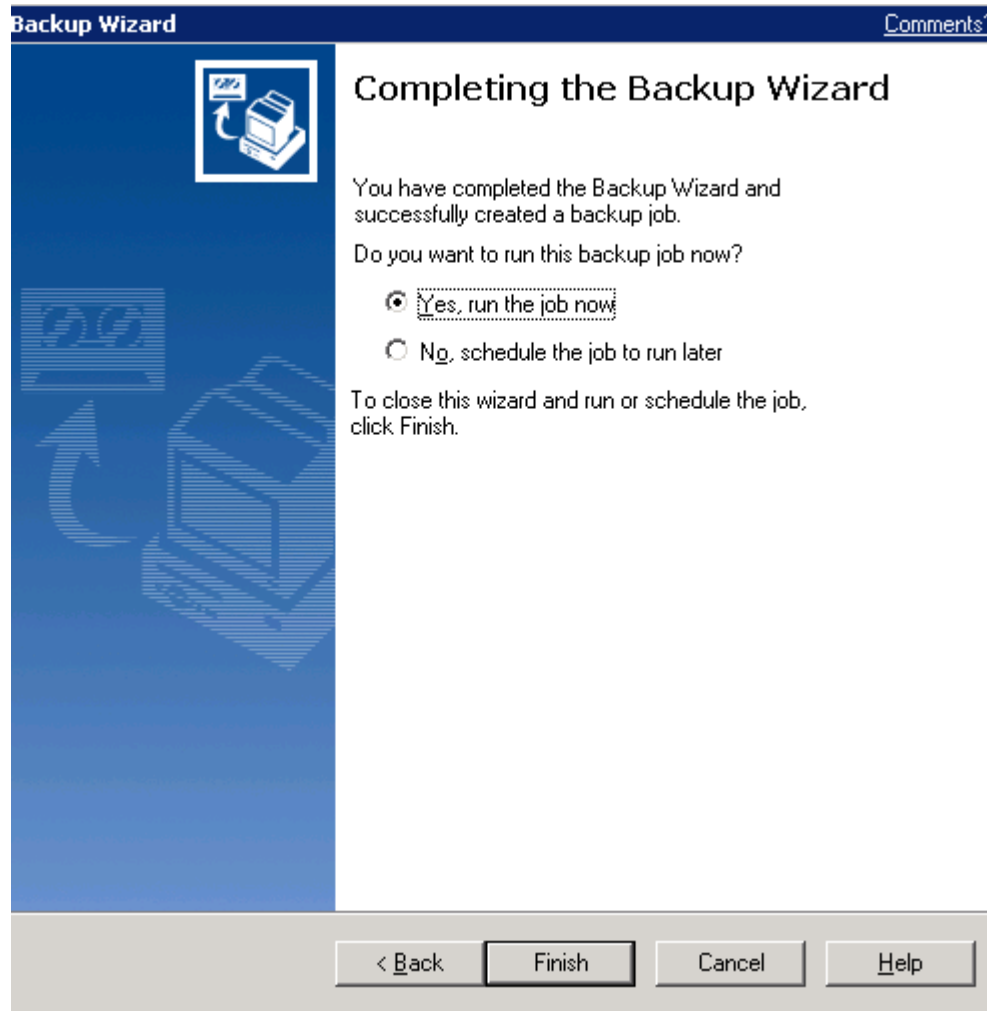
- Yes, verify after backup
- No, do not verify files after backup

< Back Next > Cancel Help

Backup Exec installation procedure for ProQA & AQUA

Now you need to decide if you want to run the backup as a one-time job or schedule it to run on a regular basis.

If you choose to run it now it will still appear in the list of available jobs so it can be run manually whenever you want or you can set the backup to run automatically at a later date.

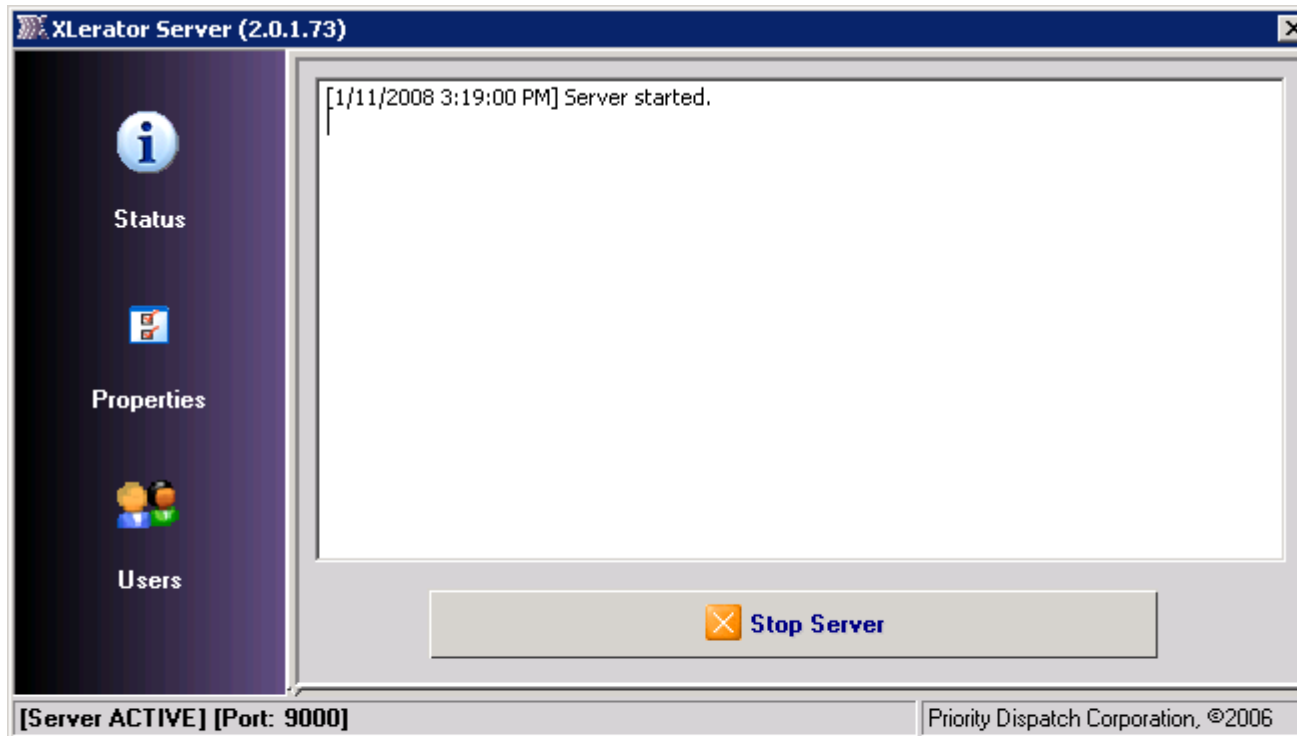


Backup Exec installation procedure for ProQA & AQUA

Some things to be aware of when restoring ProQA & AQUA

When restoring the AQUA Database you need to make sure you backup all databases already in the Program files\Priority Dispatch\Xlerator\xldb directory.

Nest, you will need to stop the Xlerator service



Backup Exec installation procedure for ProQA & AQUA

Then you need to go into Properties and delete all the database references for the databases you are going to restoring. After restoring you need to setup these references by going and finding the newly restored databases. This is done via adding and selecting an existing database. Also don't forget to restart the Xlerator service.

