

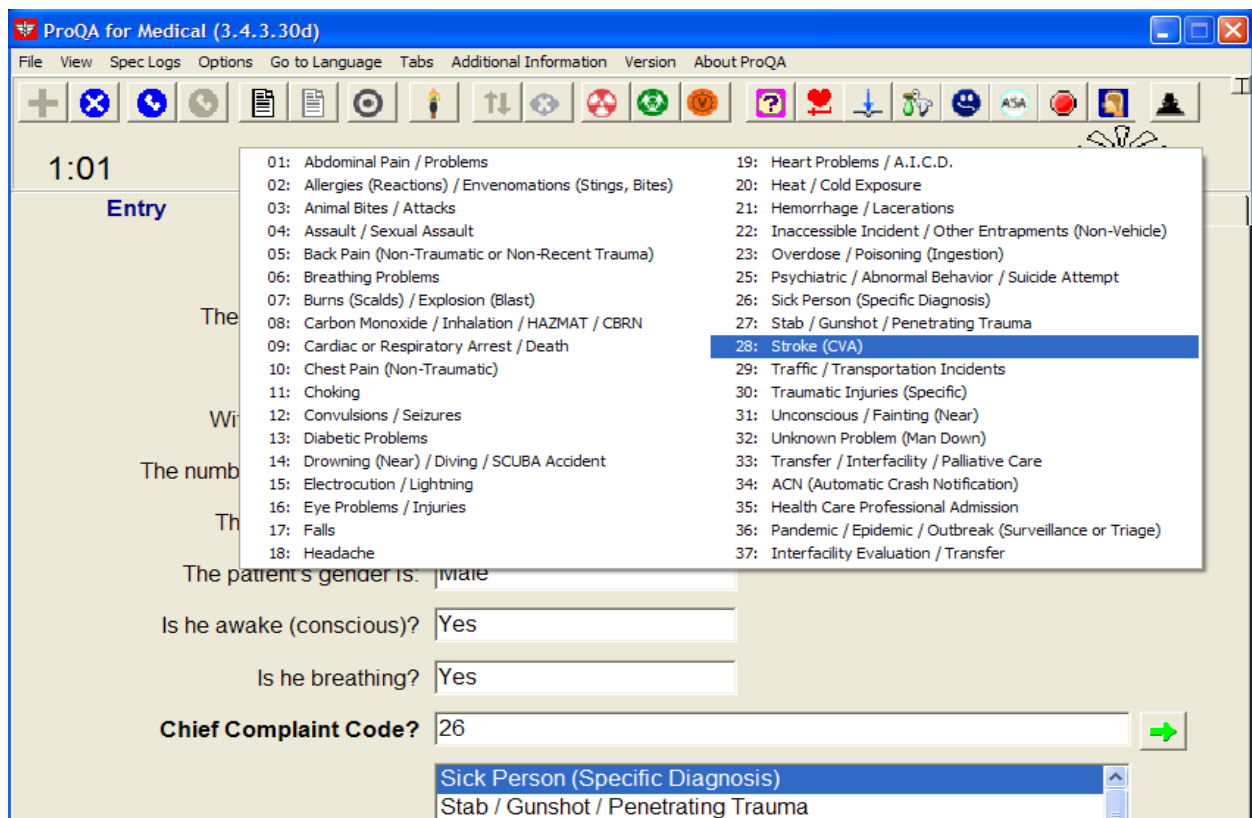
Priority Dispatch Corp: **ProQA Mandatory Update Release Information**

Date: 13 April 11

Versions released: **v3.4.3.31**

This mandatory ProQA release contains the following significant items:

An issue was introduced in the last released ProQA v3.4.3.30 build date 25 Jan 2011 and placed on the ftp site on 23 Feb 2011. In this version, if a manual protocol change from any Protocol to Protocol 28 was selected from the **top** Chief Complaint selection list, ProQA would **not** recommend a **send code** nor pass one to CAD. While this would be an uncommon thing to do, you need to be sure to update your ProQA version to v3.4.3.31 immediately. If your version is before v3.4.3.30, this problem would not be present, but we urge you to please update now anyway for the other changes and improvements listed. You must use the Installer on the ftp site which will also update and keep the Administration Utility and the Logic/Language files in synch with the new build. (Proof #5773)

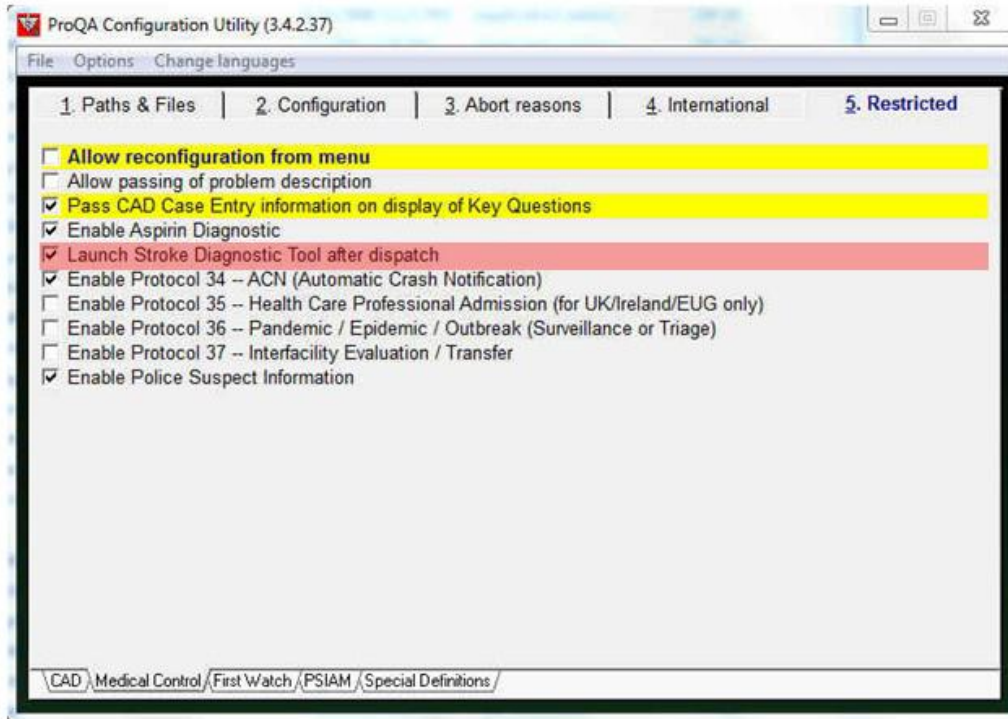


Priority Dispatch Corp: **ProQA Mandatory Update Release Information**

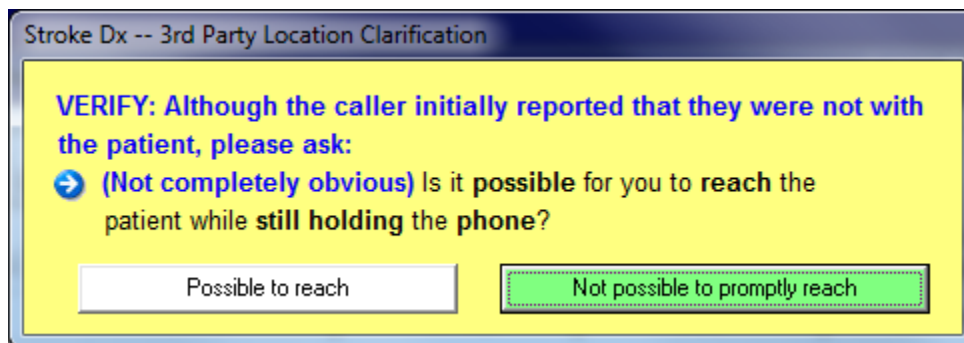
Date: 13 April 11

Versions released: v3.4.3.31

The Academy has added the ability to delay the launch of the Stroke Diagnostic Tool until after the dispatch point by selecting this option in the Administration Utility. Medical Director approval is required. (Proof #5630)



In conjunction with this feature, a 3rd party qualification directive has been added to determine the reasonable ability of the caller to get to the patient and apply the Stroke Diagnostic Tool when they have initially stated they are “not with the patient now.” (Proof #5710)

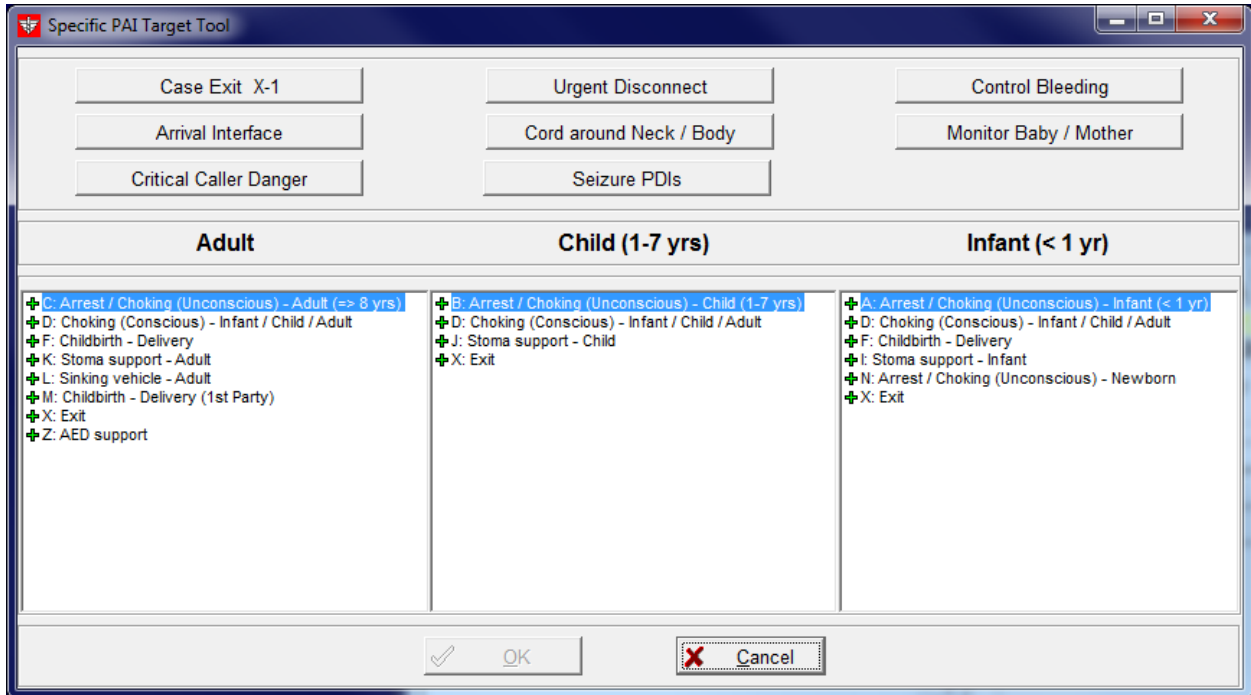


Priority Dispatch Corp: ProQA Mandatory Update Release Information

Date: 13 April 11

Versions released: v3.4.3.31

We have added a quick launch button within the "Target Tool" for accessing "Seizure PDIs" when using protocols other than Protocol 12 – Convulsion/Seizures/Fitting. (Proof #5577)



Police and Fire: Caller name entry on Case Entry is now limited to 20 characters to correspond with CAD interface specifications