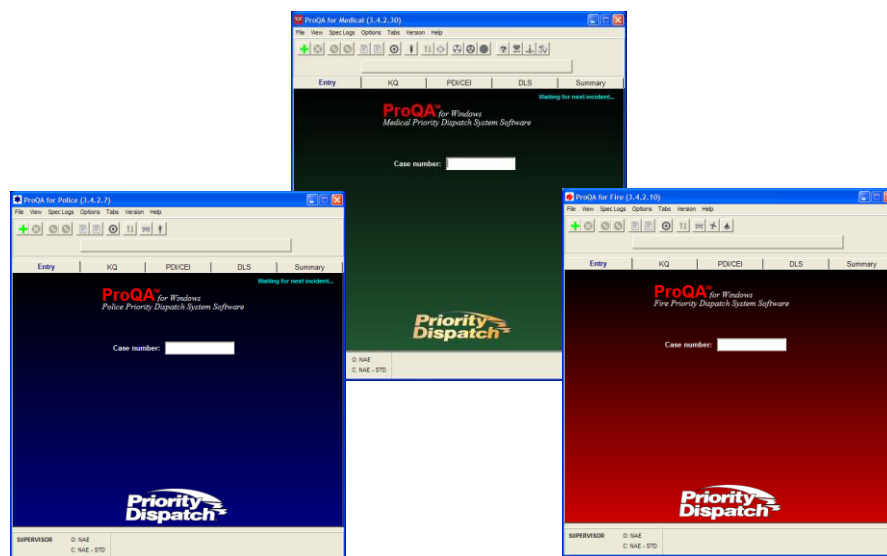


ProQA IO Command Line User Guide



Software by:

PRIORITY DISPATCH CORPORATION MEDICAL PRIORITY
CONSULTANTS, INC.

PROQA™ FOR FIRE, MEDICAL, AND POLICE

COPYRIGHT PRIORITY DISPATCH, 2008

ProQA IO Command Line User Guide

ProQA IO allows a ProQA user the ability to perform various tasks on a ProQA database through a simple DOS shell command line. To utilize the following, you may open a DOS window by going to Start-->Program Files----> Accessories---->Command Prompt. Alternatively, you can open a command prompt window by typing 'cmd' from the 'Run' option in the Start Menu.

All activity with pqaio will be processed by running the pqaio.exe file with the chosen file options as detailed below.

To receive help, run pqaio.exe with the '-h' option. This will open the help file and list the possible file options.

Ex: C:\pqaio.exe -h

All command line options, or 'flags' utilize '--' in front of them to properly process the flag. Should you need any assistance in utilizing the utility, contact ProQA Technical Support at 1-866-777-3911.

Flag Options

--file: The name and location of the database file you will be utilizing with the utility. The file location will need to be encased in "":

ex: c:\proqa.win\bin\pqaio.exe --file="c:\proqa.win\bin\test.exp"

--mode: Sets the file handler to either import or export on the ProQA database in question.

To Import a ProQA database, use the flag in this format --mode=i

To Export a database, use the flag in this format --mode=e

--filter: Sets the file handler filter to pull data as specified from the data file.

To filter only by Operator, use the flag in this format: --filter=o

To filter only by Case, use the flag in this format: --filter=c

To filter only by Date/Time, use the flag in this format: --filter=d

To filter with all options (Operator, Case, Date/Time), use the flag in this format: --filter=a

--rangelo: Sets the begin point of a filter range. This option MUST be used with the --filter option.

--rangehi: Sets the ending point of a filter range. This option MUST be used with the --filter option.

NOTE: Ranges are in a 'from and THROUGH' format. The final range on the rangehi setting will not be included, just the values between rangelo and rangehi. So, for example, if you wanted data from 1-10, you would need to set rangehi="11".

To pull a specific Operator range, use the flag in this format: --rangelo="OPERATOR INFORMATION" and --rangehi="OPERATOR INFORMATION" as setup in your database.

To specify a case range, utilize the following: --rangelo="CASE NUMBER" and --rangehi="CASE NUMBER"

To specify a date range, utilize the following format --rangelo="MM-DD-YYYY HH:MM:SS" and --rangehi="MM-DD-YYYY HH:MM:SS"

Example --rangelo="01-01-2006 01:01:01". NOTE: All timestamps must be in this format regardless of regional settings!! Furthermore, they must have data populated for each field!!

--purge: Allows you to purge data from an existing data set.

To purge data, use the flag in this format: --purge=t

To disable purging of data, use the flag in this format --purge=f

--percent: Allows you to export or import only a fixed percentage of data from a file.

To set a specific percentage of data, use the flag in this format: --percent=XX (XX equal to the number of the percent you wish to utilize)

--format: Allows you to set the exported file format. You can set the format to d=default, c=comma-delimited, f=fixed